

SOUND MARINE™



Ultra Slim stereo speakers

IP65

Low profile, **only 25mm deep**, watertight to **IP65**. Made with new CUTTING EDGE technology to significantly reduce the cone depth while offering excellent acoustic output.

Min. distance from the compass: 1 m.

Code	Colour	Ø A mm	Ø B mm	C mm	Recess Ø mm	Power W (cp)		Response frequency Hz	Sensitivity
						Rms	Max		
29.723.01	White	150	70	25	110	15	30	80 Hz - 15 KHz	86+- 2 dB
29.723.03	White	180	70	25	132	15	30	70 Hz - 15 KHz	89+- 2 dB

OSCULATI



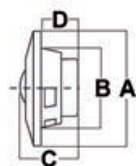
2-way non-magnetic speakers

AMAGNETICHE/NON-MAGNETIC

WATERPROOF

Non-magnetic models (designed not to disturb instruments or compasses), two-way system (for better performance to highs and lows), fitted with separate tweeter. For indoor and outdoor uses.

Code	Colour	Ø A mm	Ø B mm	C mm	D mm	Power W (pair)		Frequency Hz	Ohm
						Rms	Max		
29.722.00	White	180	128	90	60	60	100	60 - 22000	4.0



OSCULATI



▲ 29.747.02/04

▲ 29.747.01/03

2-way loudspeakers with programmable multicolour LED lights

WATERPROOF

UV RESISTANT

LED RGB

2-way loudspeakers with RGB multicolour LED lights programmable by means of the included radio remote control. 2-way loudspeakers offer better bass performance. ABS case and polypropylene diaphragm.

Code	Colour	Type	Power W		Response frequency Hz	Sensitivity dB	mm			
			RMS	Max			D	d1	H	h
29.747.01	White	5.25"	30x2	80x2	80-20000	90	166	121	83	57
29.747.02	Black	5.25"	30x2	80x2	80-20000	90	166	121	83	57
29.747.03	White	6.5"	50x2	120x2	60-20000	91	192	138	98	65
29.747.04	Black	6.5"	50x2	120x2	60-20000	91	192	138	98	65

▲ 29.747.02/04

