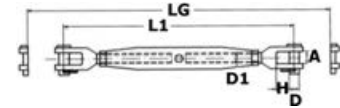


Turned rigging screws

Made of mirror polished **AISI 316 stainless steel**; fine finish, sliding threads, generously sized to provide a strong adjusting travel.

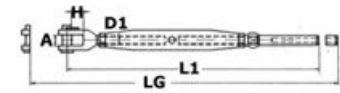
Code	Thread D1 MA	L1 mm	A mm	D mm	H mm	LG mm	Breaking load kg
07.192.04	4	115	4.5	4	8	175	410
07.192.05	5	127	5.5	5	10	195	460
07.192.06	6	150	6	6	10	230	910
07.192.08	8	180	8	8	11	255	1330
07.192.10	10	220	10.2	9	14	300	2180
07.192.12	12	270	14	12	20	380	3200
07.192.14	14	290	13	12	20	328	4300
07.192.16	16	340	17	12	26	480	5310
07.192.20	20	340	20	19	29	387	7940



Turned rigging screws with press-fitting terminal for stainless steel cables

Made with mirror polished **AISI 316 stainless steel**; fine finish, sliding threads, generously sized to provide a strong adjusting travel.

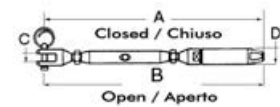
Code	Thread D1 MA	Rope Ø mm	L1 mm	A mm	H mm	LG mm
07.194.06	6	3	180	6	10	250
07.194.08	8	4	210	8	11	285
07.194.10	10	5	240	10.2	14	330
07.194.12	12	6	300	14	20	410
07.194.14	14	7	330	15	22	450



Rigging screws with built-in stainless steel allen spanner terminals

Made of **AISI 316 stainless steel**, suitable for **lifeline ends**.

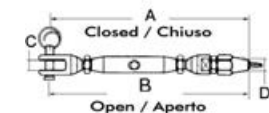
Code	for bare cables mm	Plastified wires mm	A mm	B mm	C mm	D mm
07.190.06	5/6	6	170	240	6.2	12



Turned rigging screws with built-in terminal suitable for Parafil cables

Made of **AISI 316 stainless steel**.

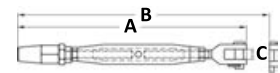
Code	Line Ø mm	A mm	B mm	C mm	D mm
07.196.07	7	187	240	6	13
07.196.09	9	190	240	6	14



Rigging screws with self-locking terminal

Made of **AISI316 stainless steel**. The inner cone **automatically blocks** the cable when inserting it.

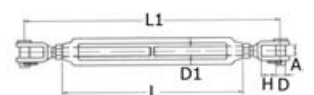
Code	Thread D1 MA	Line Ø mm	A mm	B mm	C mm
07.385.06	6	3	175	245	7.5
07.385.08	8	4	200	285	11
07.385.10	10	5	245	335	12
07.385.12	12	6	290	405	14



Rigging screws with two fixed jaws

AISI 316 stainless steel.

Code	Thread D1 MA	L1 mm	L mm	A mm	H mm	D mm	Breaking load kg
07.198.05	5	120	70	6.5	10	5	400
07.198.06	6	140	90	7.5	10	6	600
07.198.08	8	180	120	11	11	8	1000
07.198.10	9	220	150	12	14	9	1400
07.198.12	12	300	200	14	20	12	2400
07.198.16	16	375	250	17	26	16	4000



Eye to Eye Rigging screws

316 Stainless Steel.

Code	Thread D1 MA	L mm	L1 mm	A mm	Work load kg
07.193.04	4	60	100	7	-
07.193.05	5	70	120	8	160
07.193.06	6	90	150	10	320
07.193.08	8	120	200	14	560
07.193.10	10	150	240	16	880

