

## Pad-Eye foldable rings

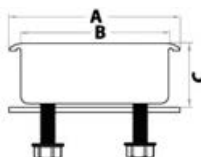
**OSCULATI**


### FLUSH DECK power point

#### AISI 316

High-resistance power point suitable to fasten rafts, inflatables, etc. on deck or platforms. or to fasten lifelines or other on sail boats. Mirror polished AISI 316 stainless steel.

Code	A mm	B mm	C mm	Breaking load kg
39.865.00	70	60	21	1100



### Electro-polished foldable half-rings

Very thick (2.85 mm) stainless steel plate and counterplate (1.42 mm).

Code	Base mm	Ring section mm	Ring mm
39.868.06	58x50	6	51x39
39.868.08	58x50	8	56x43



39.866.80/81



39.866.85



39.866.86/87/88

### Foldable stainless steel rings

#### AISI 316

Also designed as strength points; **AISI 316** stainless steel base, excellent corrosion resistance, it can bear heavy loads, vibration-dampening **rubber** washers.

Code	Base mm	Breaking load kg
39.866.80	with 3 holes 48x49	1500
39.866.81	with 3 holes 65x64	2200
39.866.85	Depresses bollard, 48x49	1500
39.866.86	with 4 holes 45x45 mm	900
39.866.87	with 4 holes 51x5 mm	1500
39.866.88	with 4 holes 76x76 mm	3000

**OSCULATI**


39.870.00



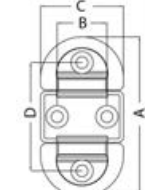
39.870.01/02/03



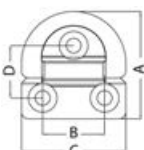
39.871.01/02/03



39.871.01/02/03



39.871.01/02/03



39.870.01/02/03

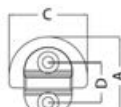
### Folding pad eyes with HR forged eye

#### AISI 316

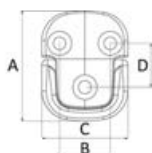
**Mirror-polished** pad eyes with full forge eye for maximum mechanical strength. Fitted with anti-vibration rubber. It comes in a recyclable display package showing breaking load values. Same centre distance as Wichard having similar dimensions.

#### FORGE RING

Code	Type	mm				Eye section Ø mm	Screw Ø mm	Breaking load kg
		A	B	C	D			
39.870.00	Single, small, 2 bores	46	-	45	23	6	6	1800
39.870.01	Single, small	47	27	45	25	6	6	2200
39.870.02	Single, medium	61	35	59	30	8	6	4000
39.870.03	Single, large	77	46	75	40	10	6	7000
39.871.01	Double, small	87	27	45	60	6	6	3600
39.871.02	Double, medium	99	35	59	60	8	6	6800
39.871.03	Double, large	126	45	75	79	10	6	12000



39.870.00


**OSCULATI**


### Square pad eyes with HR folding forged eye

#### AISI 316

Mirror-polished square pad eyes with full forge eye for maximum mechanical strength. Fitted with anti-vibration rubber. It comes in a recyclable display package showing breaking load values. Same centre distance as Wichard having similar dimensions.

#### FORGE RING

Code	Type	mm				Ring section Ø mm	Breaking load kg
		A	B	C	D		
39.873.01	Square Small	57	27	45	23	6	2700
39.873.02	Square Medium	75	35	60	30	8	5100

