

**DESPIECE MOTORES**  
**PARTS CATALOGUE**  
**ESPLOSI MOTORI**



**PARSUN**<sup>®</sup>

**REC**  
**MAF**



# DESPIECE MOTORES PARTS CATALOGUE ESPLOSI MOTORI



## F6A / F5A

PAG 4

BANDEJA Y TAPA MOTOR / BOTTON & TOP COWLING / BASE E COPPERCHIO CALANDRA	4
ARRANQUE / STARTER / AVVIAMENTO	5
BLOQUE / CRANKCASE / BLOCCO	5
CULATA / CYLINDER HEAD / TESTATA	6
DISTRIBUCIÓN / CAMSHAFT / DISTRIBUZIONE	6
CIGÜEÑAL Y PISTONES / CRANKSHAFT & PISTON / ALBERO MOTORE E PISTONE	7
BOMBA COMBUSTIBLE / FUEL SYSTEM / POMPA BENZINA	7
ADMISIÓN / INTAKE / ASPIRAZIONE	8
DIRECCIÓN / STEERING / STERZO	9
CARBURADOR / CARBURETOR / CARBURATORE	10
ELECTRICIDAD / ELECTRICAL / PARTE ELETTRICA	10
COLA SUPERIOR / UPPER CASING / PARTE ALTA PIEDE	11
CAMBIO / CONTROL SYSTEM / CALANDRA	11
SOPORTE MOTOR / BRACKET / SUPPORTE MOTORE	12
COLA INFERIOR / LOWER CASING / PARTE INFERIORE PIEDE	12



## F20A / F15A

PAG 14

TAPA MOTOR / TOP COWLING / COPPERCHIO CALANDRA	14
ARRANQUE / STARTER / AVVIAMENTO	14
BANDEJA MOTOR / BOTTON COWLING / BASE CALANDRA	15
CAMBIO / CONTROL SYSTEM / CALANDRA	16
BLOQUE / CRANKCASE / BLOCCO	17
CULATA / CYLINDER HEAD / TESTATA	18
CIGÜEÑAL Y PISTONES / CRANKSHAFT & PISTON / ALBERO MOTORE E PISTONE	18
VÁLVULA / VALVE / VALVOLA	19
DISTRIBUCIÓN / CAMSHAFT / DISTRIBUZIONE	19
BOMBA COMBUSTIBLE / FUEL SYSTEM / POMPA BENZINA	20
ADMISIÓN / INTAKE / ASPIRAZIONE	20
CARBURADOR / CARBURETOR / CARBURATORE	21
ELECTRICIDAD / ELECTRICAL / PARTE ELETTRICA	22
DIRECCIÓN / STEERING / STERZO	24
SOPORTE MOTOR / BRACKET / SUPPORTE MOTORE	25
COLA SUPERIOR / UPPER CASING / PARTE ALTA PIEDE	26
COLA INFERIOR / LOWER CASING / PARTE INFERIORE PIEDE	28
CAJA DE MANDOS / CONTROL BOX / SCATOLA COMANDI	29



## F40FWL-T

PAG 32

TAPA MOTOR / TOP COWLING / COPPERCHIO CALANDRA	32
BANDEJA MOTOR / BOTTON COWLING / BASE CALANDRA	33
ARRANQUE / STARTER / AVVIAMENTO	34
CAMBIO / CONTROL SYSTEM / CALANDRA	35
BLOQUE / CRANKACASE / BLOCCO	37
CULATA / CYLINDER HEAD / TESTATA	38
CIGÜEÑAL Y PISTONES / CRANKSHAFT & PISTON / ALBERO MOTORE E PISTONE	39
VÁLVULA / VALVE / VALVOLA	39
BOMBA COMBUSTIBLE / FUEL SYSTEM / POMPA BENZINA	40
ADMISIÓN / INTAKE / ASPIRAZIONE	41
CARBURADOR / CARBURETOR / CARBURATORE	42
ELECTRICIDAD / ELECTRICAL / PARTE ELETTRICA	44
DIRECCIÓN / STEERING / STERZO	47
SOPORTE MOTOR / BRACKET / SUPPORTE MOTORE	48
COLA SUPERIOR / UPPER CASING / PARTE ALTA PIEDE	51
COLA INFERIOR / LOWER CASING / PARTE INFERIORE PIEDE	52
CARTER / OIL PAN / COPPA LO'OLLIO	55
CAJA DE MANDOS / CONTROL BOX / SCATOLA COMANDI	56
BOMBA DE ACEITE / OIL PUMP / POMPA OLIO	58
DEPÓSITO EXTEIOR / OUTER FUEL TANK / SERBATOIO ESTERNO	58
BOMBA ACEITE ELÉCTRICA / ELECTRIC OIL PUMP / POMPA OLIO ELETTRICA	59
POWER TRIM & TILT	60
CIRCUITO COMBUSTIBLE / FUEL COMMON RAIL / COMBUSTIBILE	61



## F50FWL-T / F60FWL-T

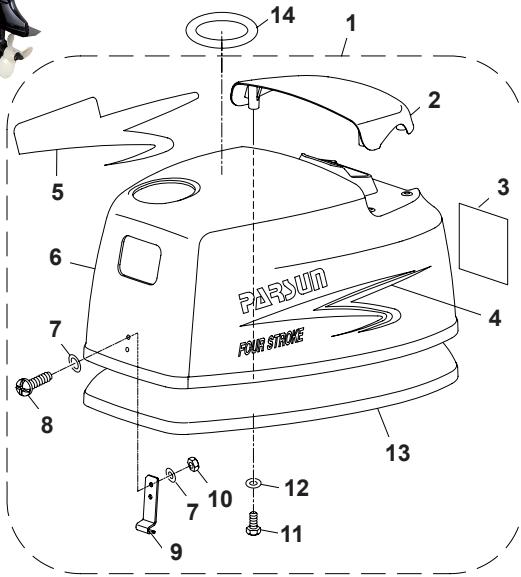
PAG 63

TAPA MOTOR / TOP COWLING / COPPERCHIO CALANDRA	63
VARILLA ENLACE / LINK ROD / ASTICELLA DI UNIONE	63
BANDEJA MOTOR / BOTTON COWLING / BASE CALANDRA	64
COLA SUPERIOR / UPPER CASING / PARTE ALTA PIEDE	65
CAMBIO / CONTROL SYSTEM / CALANDRA	66
BLOQUE / CRANKACASE / BLOCCO	67
CULATA / CYLINDER HEAD / TESTATA	68
CIGÜEÑAL Y PISTONES / CRANKSHAFT & PISTON / ALBERO MOTORE E PISTONE	68
BOMBA COMBUSTIBLE / FUEL SYSTEM / POMPA BENZINA	69
SOPORTE MOTOR / BRACKET / SUPPORTE MOTORE	70
ADMISIÓN / INTAKE / ASPIRAZIONE	71
ELECTRICIDAD / ELECTRICAL / PARTE ELETTRICA	72
COLA INFERIOR / LOWER CASING / PARTE INFERIORE PIEDE	74
CAJA DE MANDOS / CONTROL BOX / SCATOLA COMANDI	76
CARTER / OIL PAN / COPPA LO'OLLIO	77
BOMBA ACEITE ELÉCTRICA / ELECTRIC OIL PUMP / POMPA OLIO ELETTRICA	78
BOMBA DE ACEITE / OIL PUMP / POMPA OLIO	79
DEPÓSITO EXTEIOR / OUTER FUEL TANK / SERBATOIO ESTERNO	80
CIRCUITO COMBUSTIBLE / FUEL COMMON RAIL / COMBUSTIBILE	80
TILT HIDRÁULICO / HYDRAULIC TILT / TILT IDRAULICO	81
VÁLVULA / VALVE / VALVOLA	83



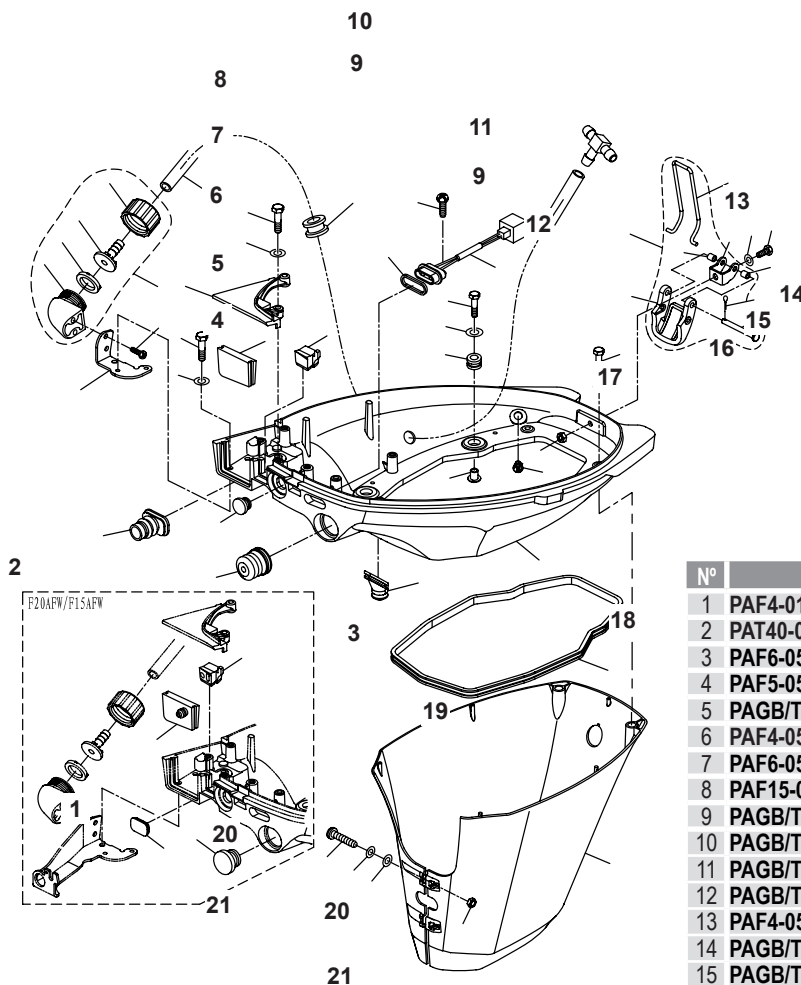
## F6A / F5A

### TAPA MOTOR / TOP COWLING ASSY / COPPERCHIO CALANDRA



N°	Ref.	Description	Quantity
1	PAF6-06000000	TOP COWLING ASSY	1
2	PAF6-06000004	COVER, TOP COWLING	1
3	PAF8-08000008	MARK 6	1
	PAF4-08000005	MARK 5	
4	PAF15-12000001	LEFT MARK	1
5	PAF15-12000002	RIGHT MARK	1
6	PAF6-06000001	TOP COWLING	1
7	PAGB/T97.1-5	WASHER 5	4
8	PAGB/T818-M5x14	SCREW, PAN HEAD M5x14	2
9	PAT36-06000003	FRONT POTHOOK	1
10	PAGB/T6170-M5	NUT M5	2
11	PAGB/T5783-M6x20	BOLT M6x20	4
12	PAGB/T97.1-6	WASHER 6	4
13	PAF6-06000002	SEAL	1
14	PAF4-08000019	MARK 19	1

### BANDEJA / BOTTOM COWLING / BASE CALANDRA

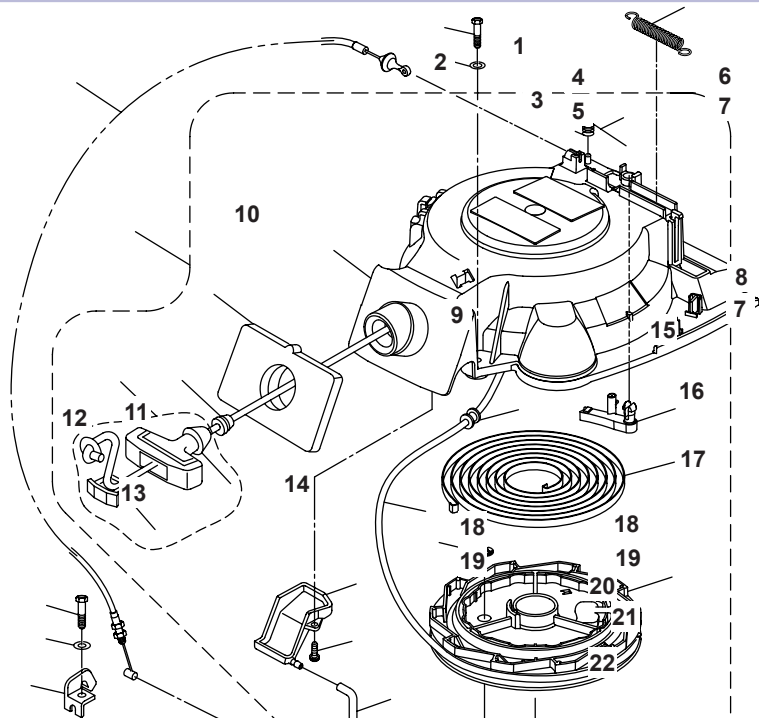


N°	Ref.	Description	Quantity
1	PAF4-01090401	STOPPER, HANG ROPE ASSY	1
2	PAT40-01020101	ENGINE STOP SWITCH ASSY	1
3	PAF6-05000001	BOTTOM COWLING	1
4	PAF5-05000102	PLUG, RUBBER	1
5	PAGB/T818-M4x12	SCREW M4x12	1
6	PAF4-05000101	KNOP, OIL SWITCH	1
7	PAF6-05000100	OIL SWITCH ASSY	1
8	PAF15-00000006	PIN Ø6x12	1
9	PAGB/T97.1-6	WASHER 6	5
10	PAGB/T818-M6x12	SCREW M6x12	1
11	PAGB/T5783-M6x20	BOLT M6x20	4
12	PAGB/T6170-M8	NUT M8	2
13	PAF4-05000023	LOCKING HOOK	1
14	PAGB/T818-M5x16	SCREW M5x16	1
15	PAGB/T97.1-5	WASHER 5	1
16	PAF4-05000020	SEAT, LOCKING HOOK	1
17	PAGB/T889.1-M5	LOCKING NUT M5	1
18	PAF5-05000013-2	COVER, RUBBER	1
19	PAF6-05000009	HANDLE	1
20	PAGB/T97.1-8	WASHER 8	2
21	PAF25-01010303	BOLT M8x20	2

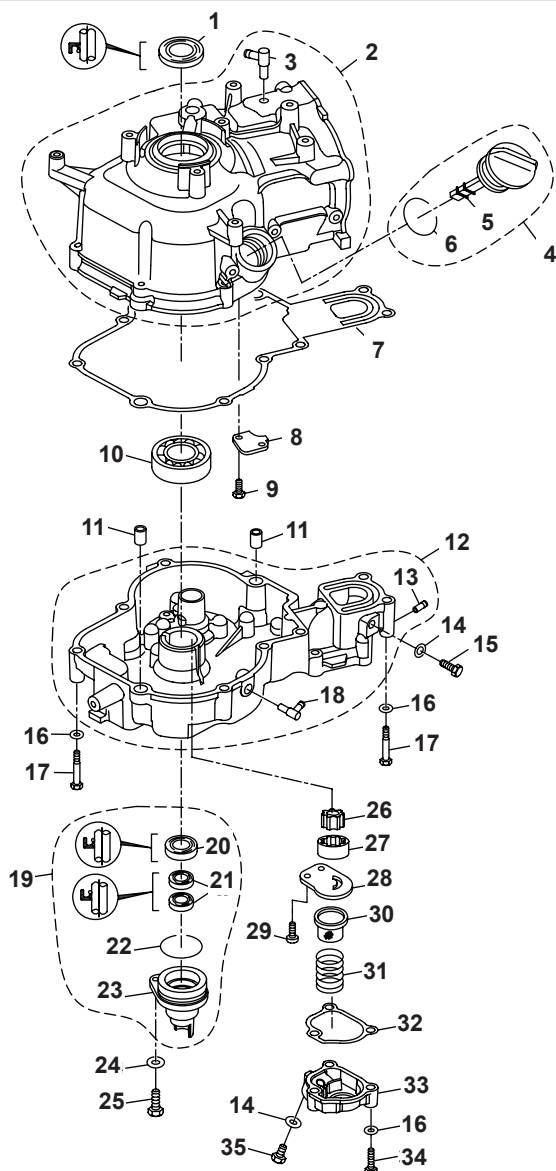


## ARRANQUE / STARTER ASSY / AVVIAMENTO

N°	Ref.	Description	Quantity
1	PAF6-05000010	TIGHTWIRE, DETENT	1
2	PAF6-04070000	STARTER ASSY	1
3	PAF6-04070001	CASING, STARTER	1
4	PAF4-04130009	DETENT	1
5	PAF4-04130010	WREST SPRING, DETENT	1
6	PAGB/T5783-M6x20	BOLT M6x20	1
7	PAGB/T97.1-6	WASHER 6	3
8	PAGB/T5783-M6x35	BOLT M6x35	2
9	PAF4-04130013	MEATUS, START ROPE	1
10	PAF6-04070003	ABSORBER, RUBBER	1
11	PAF4-04130101	HANDLE, STARTER	1
12	PAF4-04130102	COVER, STARTER HANDLE	1
13	PAF4-04130100	STARTER HANDLE ASSY	1
14	PAF4-04130011	WIRE, STARTER	1
15	PAF4-04130014	WASHER, THRUST	1
16	PAF4-04130005	SPRING, VOLUTE	1
17	PAF4-04130019	WHELL, START-UP	1
18	PAF4-04130004	SPRING, DRIVE	2
19	PAF4-04130003	PAWL, DRIVE	2
20	PAF4-04130007	SPRING, PLATE	1
21	PAF4-04130006	PLATE, PRELL	1
22	PAF4-04130008	BOLT, STARTER	1



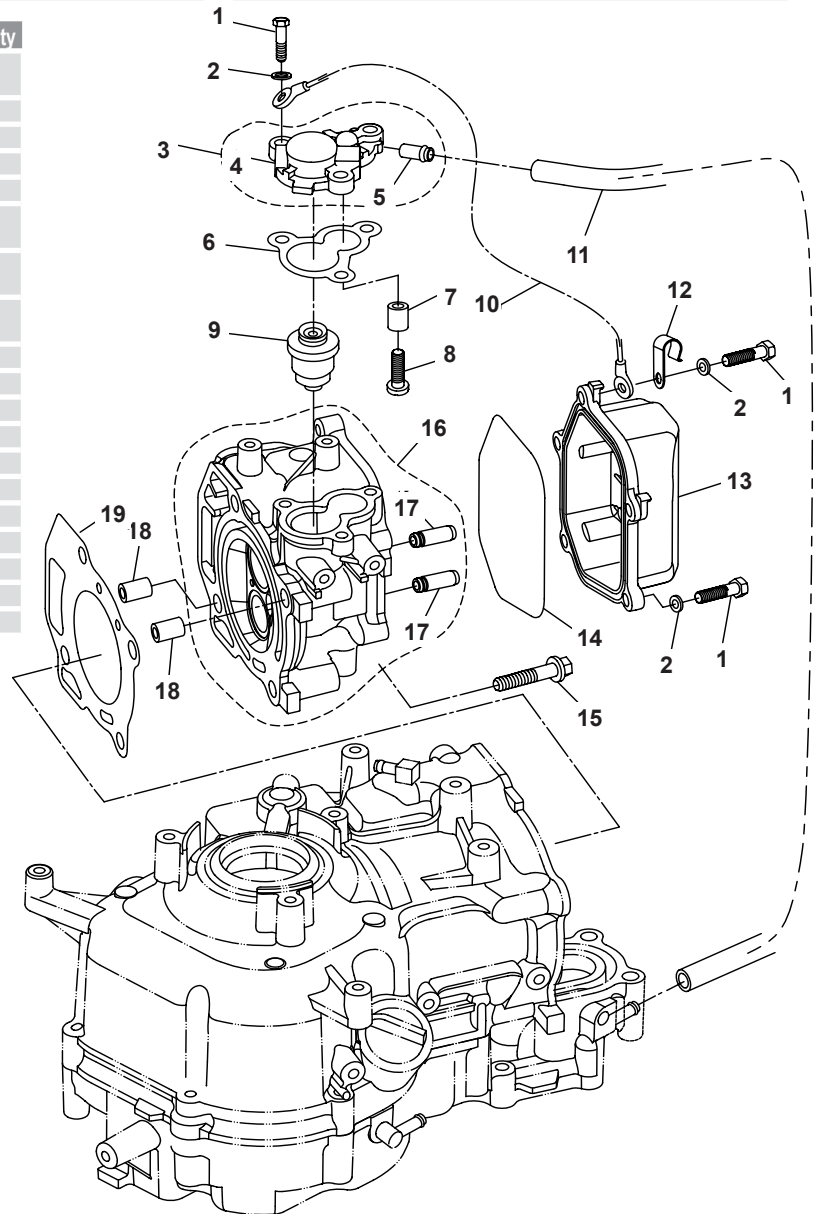
## BLOQUE / CRANKCASE / BLOCCO



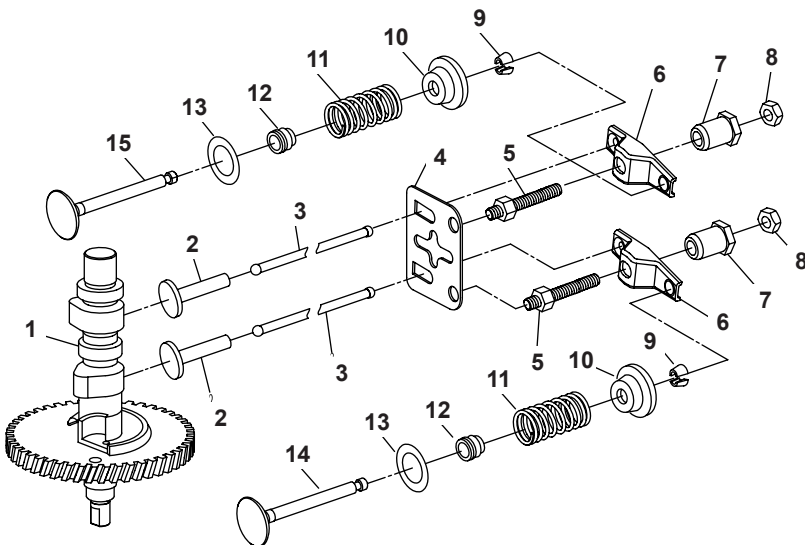
N°	Ref.	Description	Quantity
1	PAF4-04010004	OIL SEAL	1
2	PAF6-04010100	CRANK CASE ASSY	1
3	PAF8-05000700	GAS NIPPLE ASSY	1
4	PAF4-04000010	PLUG WITH DIPSTICK ASSY	1
5	PAF4-04000007	PLUG WITH DIPSTICK	1
6	PAF4-04000008	O-RING	1
7	PAF6-04000001	COMPLEX GASKET, CRANKCASE	1
8	PAF6-04010004	OIL BAFFLE PLATE	1
9	PAGB/T5783-M5x10	BOLT M5x10	2
10	PANTN 6205C3	BEARING 6205C3	1
11	PAF4-04000003	HOLLOW PIN Ø10x8.4x14	2
12	PAF6-04040100	COVER, CRANK CASE	1
13	PAF4-04010102	GAS NIPPLE	1
14	PAF4-04000006	WASHER	2
15	PAGB/T5783-M8x14	BOLT M8x14	1
16	PAGB/T97.1-6	WASHER 6	13
17	PAT6-05000021	BOLT M6x50	10
18	PAF15-04000005	WATER NIPPLE	1
19	PAF4-04060000	OIL SEAL SHELL ASSY	1
20	PAF2.6-04010001	OIL SEAL 20x30x7	1
21	PAF4-04060004	OIL SEAL 10.8x21x7	2
22	PAGB/T3452.1-Ø32.5xØ1.8	O-RNG Ø32.5xØ1.8	1
23	PAF4-04060001	SHELL, OIL SEAL	1
24	PAGB/T97.1-8	WASHER 8	1
25	PAGB/T5783-M8x20	BOLT M8x20	1
26	PAF6-04040002	INNER ROTOR, OIL PUMP	1
27	PAF6-04040003	OUTER ROTOR, OIL PUMP	1
28	PAF6-04040004	COVER BOARD, OIL PUMP	1
29	PAGB/T818-M6x10	BOLT M6x10	2
30	PAF6-04040006	STRAINER, OIL PUMP	1
31	PAF6-04040007	SPRING, OIL PUMP	1
32	PAF6-04040005	GASKET, OIL PUMP	1
33	PAF6-04040008	COVER, OIL PUMP	1
34	PAGB/T5783-M6x35	BOLT M6x35	3
35	PAF6-04040009	BOLT	1

## CULATA / CYLINDER HEAD / TESTATA

N°	Ref.	Description	Quanty
1	PAGB/T5783-M6x20	BOLT M6x20	8
2	PAGB/T97.1-6	WASHER 6	8
3	PAF4-04070000	THERMOSTAT COVER ASSY	1
4	PAF4-04070001	COVER THERMOSTAT	1
5	PAF4-04010102	NOZZLE	1
6	PAF4-04000011	GSKET, THERMOSTAT COVER	1
7	PAF4-04070003	ANODE, THERMOSTAT COVER	1
8	PAGB/T818-M5x25	SCREW M5x25	1
9	PAF15-07000031	THERMOSTAT (S60)	1
10	PAF6-04000009	WIRE, LEAD	1
11	PAF6-04000020	PIPE, RETURN WATER	1
12	PAT36-04000023	CLAMP	1
13	PAF6-04000004	COVER, CYLINDER HEAD	1
14	PAF6-04000005	SEAL, RING	1
15	PAF4-04000034	BOLT, CYLINDER HEAD	4
16	PAF6-04050100	CYLINDER HEAD ASSY	1
17	PAF4-04080102	GUIDE, VALVE	2
18	PAF4-04000003	HOLLOW PIN Ø10x8.4x14	2
19	PAF6-04000002	GASKET, CYLINDER HEAD	1

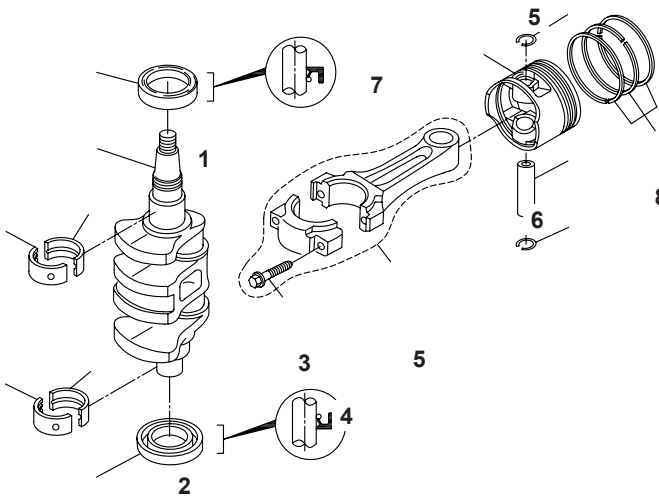


## DISTRIBUCIÓN / CAMSHAFT / DISTRIBUZIONE



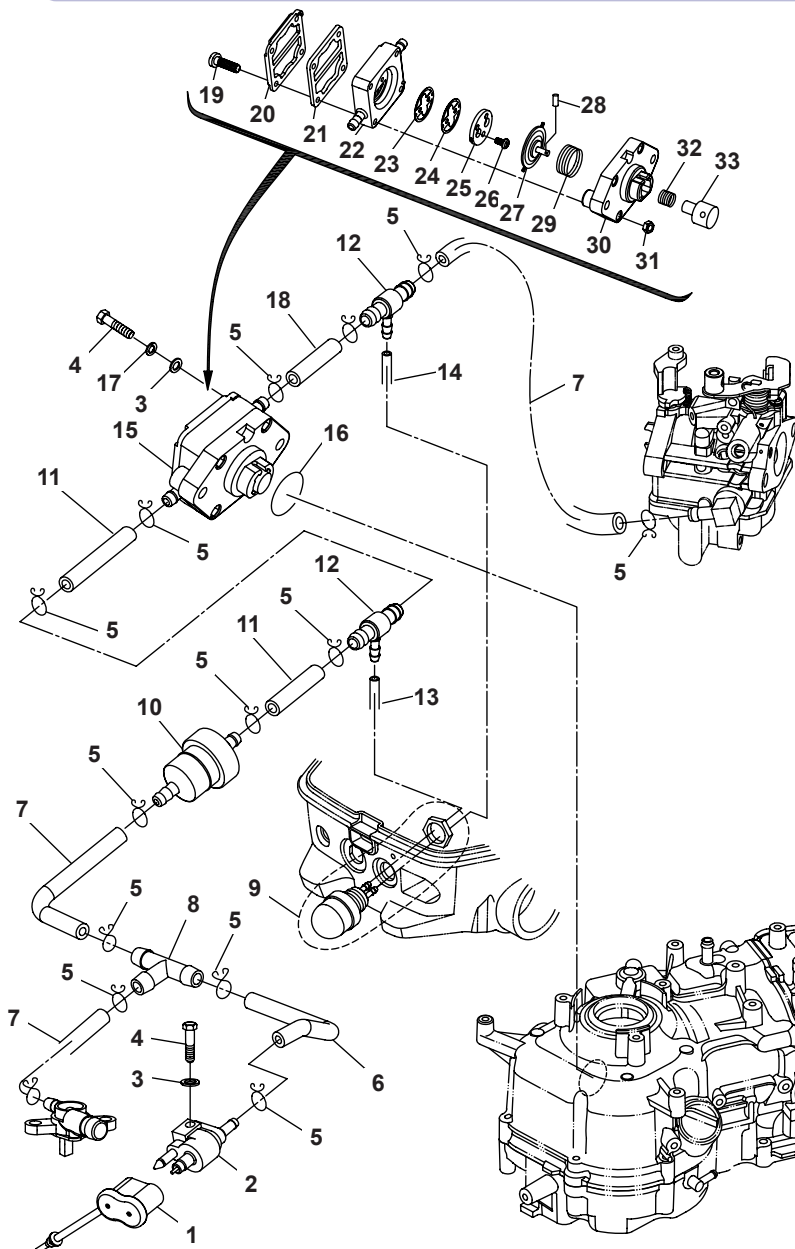
N°	Ref.	Description	Quanty
1	PAF6-04030000	CAMSHAFT ASSY	1
2	PA166F-000001	LIFTER, VALVE	2
3	PAF6-04000003	ROD, VALVE PUSH	2
4	PAF6-04050004	PLATE, PUSH ROD	1
5	PA166F-010008	BOLT, ROCKER ARM	2
6	PA166F-010009	ARM, VALVE ROCKER	2
7	PA166F-010010	PIVOT, ROCKER ARM	2
8	PA166F-010011	LOCKNUT M6x0.75	2
9	PAF8-05030007	CLAMP, VALVE	4
10	PAF8-05030006	SEAT, VALVE SPRING	2
11	PAF6-04050003	SPRING, VALVE	2
12	PA166F-010003	OIL SEAL, VALVE	2
13	PAF4-04080007	WASHER, VALVE SPRING	2
14	PAF6-04050002	DOOR, EXHAUST	1
15	PAF6-04050001	DOOR, INTAKE	1

## CIGÜEÑAL Y PISTONES / CRANKSHAFT & PISTON ALBERO MOTORE E PISTONE



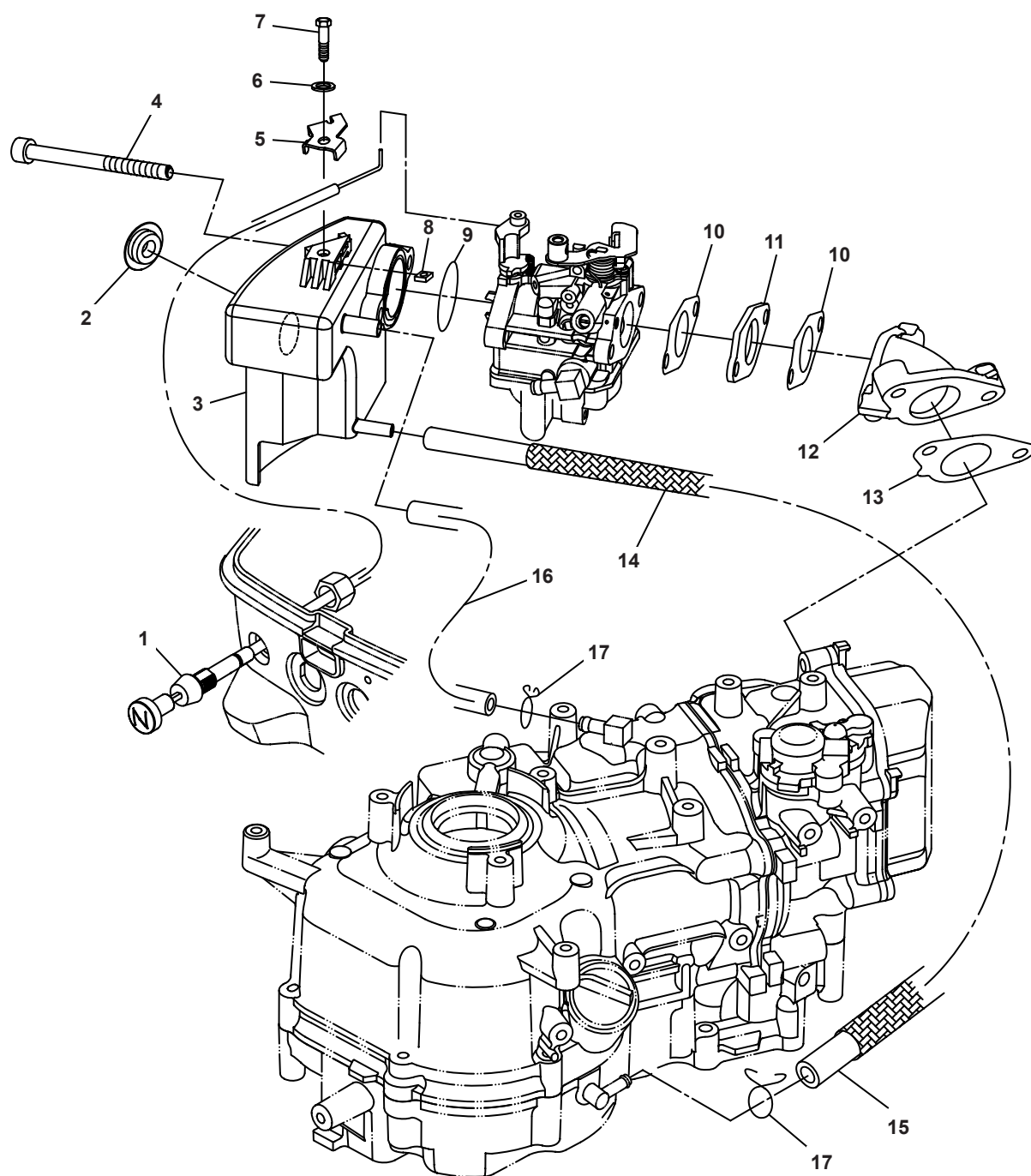
Nº	Ref.	Description	Quantity
1	PAF6-04000100	CRANK ASSY	1
2	PAF4-04000004	WASHER	1
3	PAF4-04020103	BOLT M7x35	2
4	PAF6-04020100	ROD, CONNECTING	1
5	PAF6-04020004	CIRCLIP	2
6	PAF6-04020003	PIN, PISTON	1
7	PAF6-04020001	PISTON	1
8	PAF6-04020002	PISTON RING ASSY	1

## BOMBA COMBUSTIBLE / FUEL SYSTEM / POMPA BENZINA



Nº	Ref.	Description	Quantity
1	PAF6-05000006	RUBBER COVER	1
2	PAF4-05000200	FUEL PIPE, TIE-IN ASSY	1
3	PAGB/T97.1-6	WASHER 6	3
4	PAGB/T5783-M6x25	BOLT M6x25	3
5	PAF4-04000030	CLIP "B", FUEL PIPE	14
6	PAF6-05000002	FUEL PIPE "E"	1
7	PAF4-05000007	FUEL PIPE "C"	3
8	PAF15-05000011	PIPE, JOINT 3	1
9	PAF6-05010000	MANUAL PUMP ASSY	1
10	PAF4-05000300	FUEL FILTER ASSY	1
11	PAF6-04000017	FUEL PIPE "C" Ø5xØ10x60	2
12	PAF6-04000600	PIPE JOINT 3	2
13	PAF6-04000018	FUEL PIPE "D" Ø2.5xØ7x240	1
14	PAF6-04000016	FUEL PIPE "B" Ø2.5xØ7x500	1
15	PAF4-04090000	FUEL PUMP ASSY	1
16	PAF4-04090009	O-RING	1
17	PAGB/T93-6	SPRING WASHER 6	2
18	PAT6-03000002	PIPE	1
19	PAGB/T823-M4x25	SCREW, SMALL PAN HEAD M4x25	4
20	PAF4-04090003	COVER, FUEL PUMP	1
21	PAF4-04090004	DIAPHRAGM, TOP	1
22	PAF4-04090100A	FUEL PUMP SHELL	1
23	PAF4-04090001A	VALVE "B"	1
24	PAF4-04090002A	VALVE "A"	1
25	PAF4-04090003A	LIMITING BLOCK, SEPTUM	1
26	PAGB/T819.2-M3x5	SCREW M3x5	2
27	PAF4-04090100	DIAPHRAGM ASSY	1
28	PAGB/T309-3x12	ROLLER NEEDLE Ø3x12	1
29	PAF4-04090008	SPRING, DIAPHRAGM	1
30	PAF4-04090001	SEAT, FUEL PUMP	1
31	PAGB/T6170-M4	NUT M4	4
32	PAF4-04090007	SPRING, PLUNGER	1
33	PAF4-04090006	PLUNGER	1

## ADMISIÓN / INTAKE / ASPIRAZIONE

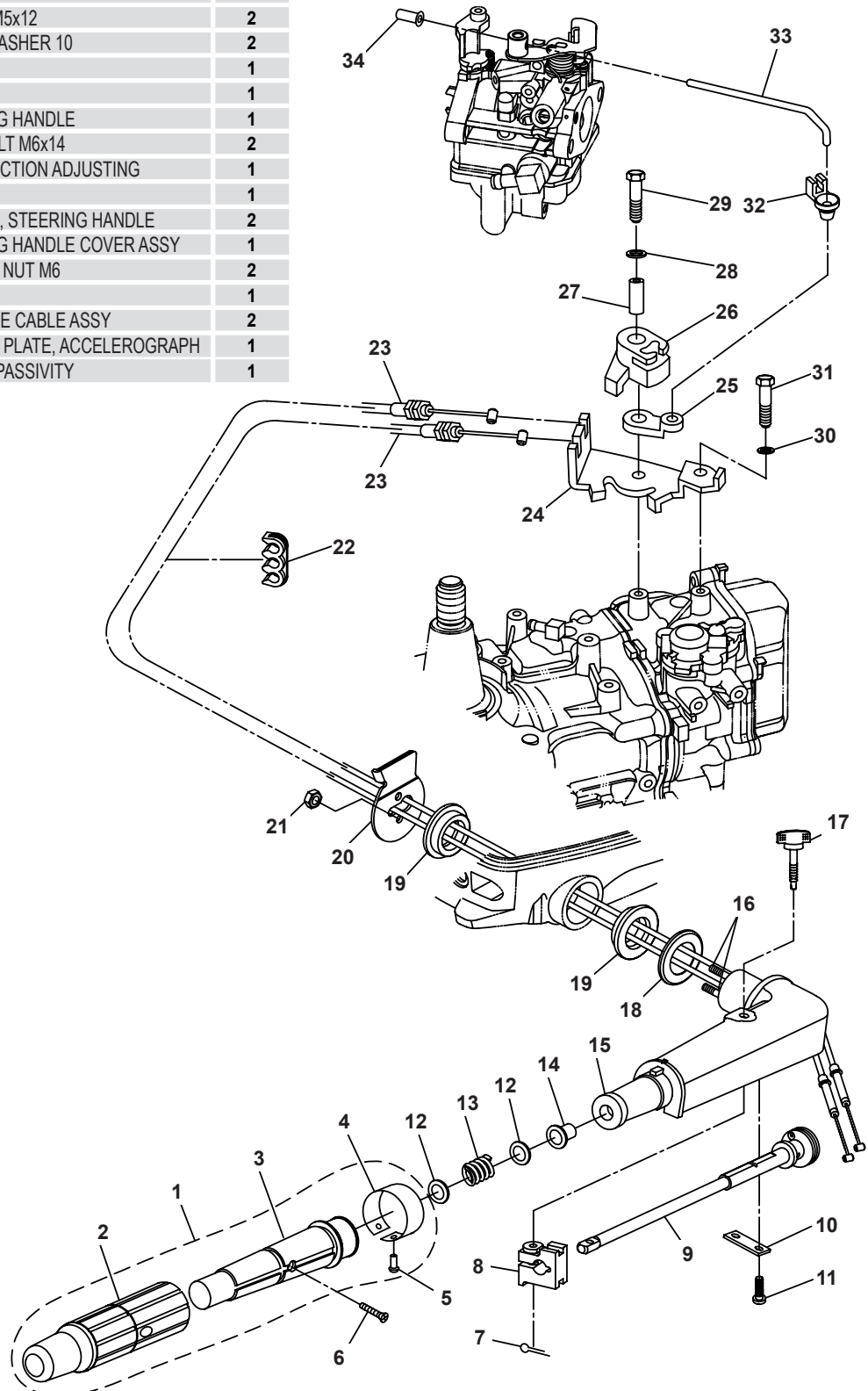


Nº	Ref.	Description	Quantity
1	PAF6-05000200	AIR CHOKE ASSY	1
2	PAF4-04110003	PLUG, INTAKE SILENCE	1
3	PAF6-04000200	INTAKE SILENCE ASSY	1
4	PAGB/T70.1-M6x85	BOLT M6x85	2
5	PAF6-04000014	PRESSING PLATE	1
6	PAGB/T97.1-5	WASHER 5	1
7	PAGB/T5783-M5x10	BOLT M5x10	1
8	PAGB/T39-M5	SQUARE NUT M5	1
9	PAGB/T3452-31.5x1.8	O-RING	1
10	PAF6-04000012	GASKET, CARBURETOR	2
11	PAF6-04000013	GASKET, CARBURETOR	1
12	PAF6-04000011	MANIFOLD, INTAKE	1
13	PAF6-04000010	GASKET, INTAKE MANIFOLD	1
14	PAF6-04000302	JACKET, RETURN OIL PIPE	1
15	PAF6-04000301	PIPE, RETURN OIL	1
16	PAF6-04000019	PIPE "B", RETURN OIL	1
17	PAF4-04000030	CLIP "B", FUEL PIPE	2

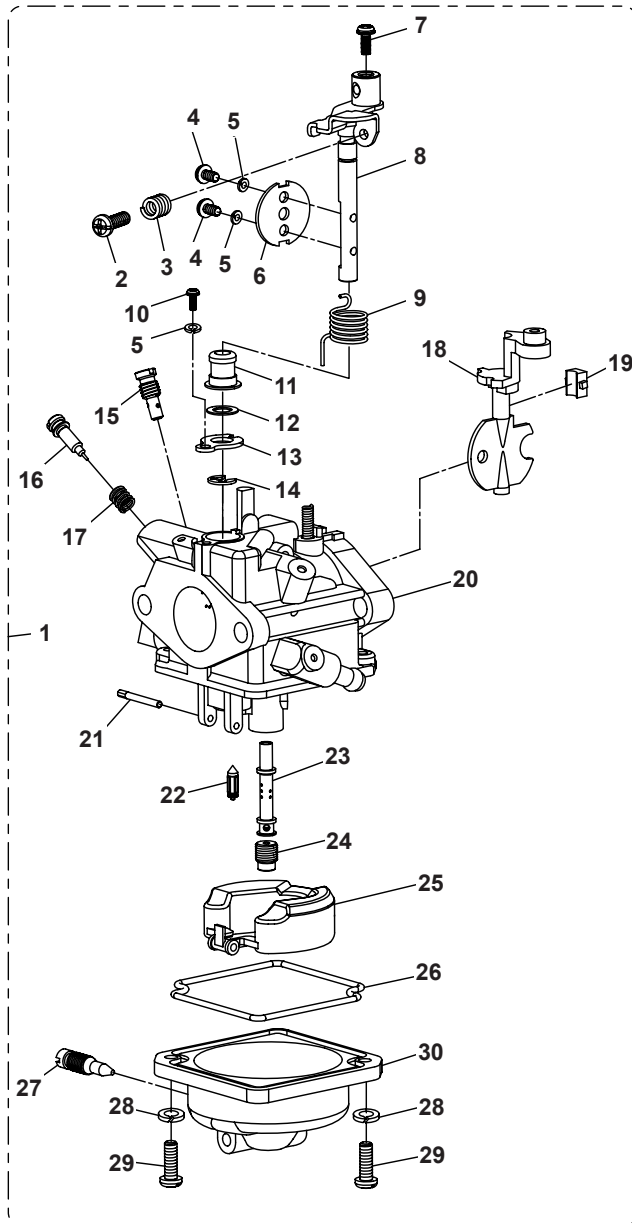


## DIRECCIÓN / STEERING / STERZO

Nº	Ref.	Description	Qty	Nº	Ref.	Description	Qty
1	PAF4-01090300	STEERING HANDLE ASSY	1	26	PAF6-04000023	PULLEY, DRIVE	1
2	PAF4-01090302	RUBBER, STEERING HANDLE	1	27	PAF6-04000025	BUSHING	1
3	PAF4-01090301	GRIP, STEERING HANDLE	1	28	PAGB/T96-6	BIG WASHER 6	1
4	PAF4-01090303	INDICATOR THROTTLE	1	29	PAGB/T5783-M6x35	BOLT M6x35	1
5	PAGB/T827-2x5	RINET Ø2x5	1	30	PAGB/T97.1-6	WASHER 6	1
6	PAGB/T820-M5x25	SCREW M5x25	1	31	PAGB/T5783-M6x10	BOLT M6x10	1
7	PAGB/T91-1.6x12	COTTER PIN 1.6x12	1	32	PAF15-07000016	JOINT, ACCELEROGRAPH CONTROL	1
8	PAF4-01090003	FRICTION, STEERING HANDLE	1	33	PAF6-04000027	LINK ROD, ACCELEROGRAPH CONTROL	1
9	PAF6-01020100	LEVER, THROTTLE	1	34	PAF6-04000028	RUBBER CAP	1
10	PAF15-01020002	FIXED PLATE	1				
11	PAGB/T818-M5x12	SCREW M5x12	2				
12	PAGB/T848-10	SMALL WASHER 10	2				
13	PAF4-01090007	SPRING	1				
14	PAF4-01090006	BUSHING	1				
15	PAF6-01020001	STEERING HANDLE	1				
16	PAGB/T899-M6x14	STUD BOLT M6x14	2				
17	PAF4-01090200	BOLT, FRICTION ADJUSTING	1				
18	PAF6-01000002	COVER	1				
19	PAF6-01000001	BUSHING, STEERING HANDLE	2				
20	PAF6-01000003	STEERING HANDLE COVER ASSY	1				
21	PAGB/T889.1-M6	LOCKING NUT M6	2				
22	PAF25-05000016	CLAMP	1				
23	PAF6-01020200	THROTTLE CABLE ASSY	2				
24	PAF6-04000022	FIXATION PLATE, ACCELEROGRAPH	1				
25	PAF6-04000024	PULLEY, PASSIVITY	1				

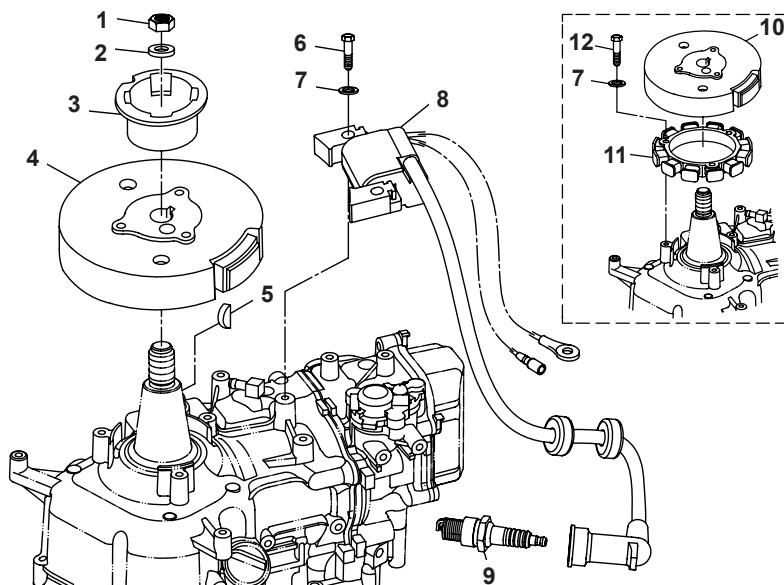


## CARBURADOR / CARBURETOR ASSY / CARBURATORE



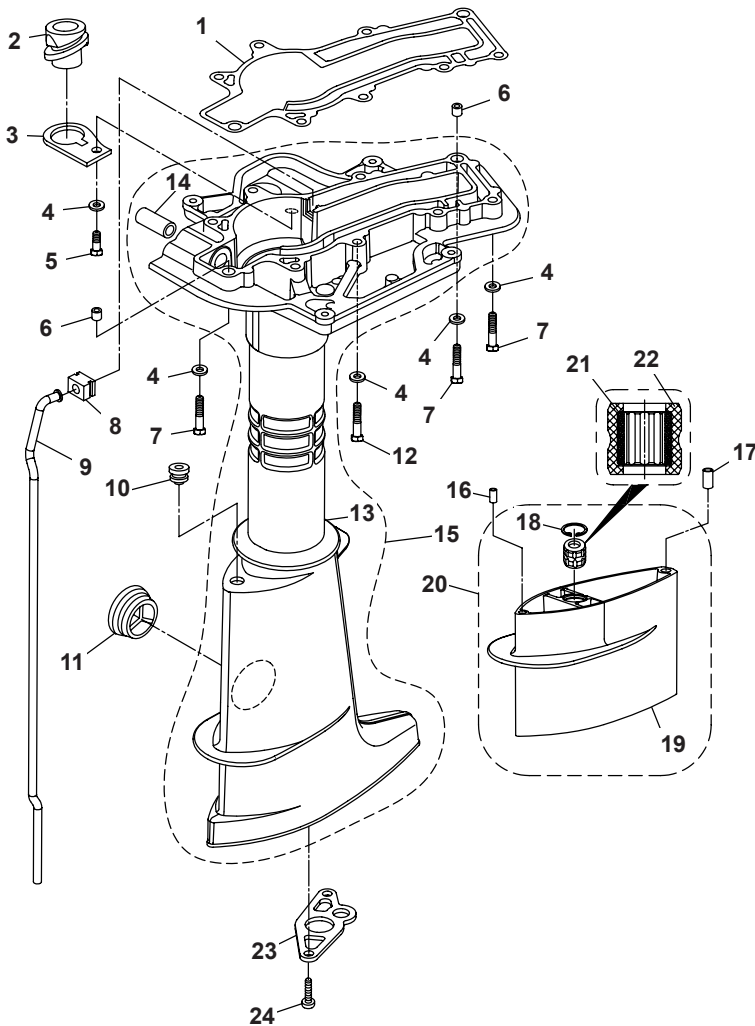
N°	Ref.	Description	Quantity
1	PAF6-04060000	CARBURETOR ASSY	1
2	PAF6-04060006	SCREW, AIR ADJUSTING	1
3	PAF6-04060007	SPRING	1
4	PAGB/T818-M3x6	SCREW M3x6	2
5	PAGB/T93-3	SPRING WASHER 3	3
6	PAF6-04060008	APRON, ACCELERATOR	1
7	PAGB/T818-M4x8	SCREW M4x8	1
8	PAF6-04060100	ACCELERATOR BAR ASSY	1
9	PAF6-04060002	SPRING, SWING LINK	1
10	PAGB/T818-M3x8	SCREW M3x8	1
11	PAF6-04060003	BUSHING	1
12	PAF6-04060004	WASHER, NYLON	1
13	PAF6-04060005	PRESSING PLATE	1
14	PAGB/T896-4	CIRCLIP 4	1
15	PAF6-04060013	JET, AIR ADJUSTING	1
16	PAF6-04060011	SCREW, MIXTURE	1
17	PAF6-04060012	SPRING	1
18	PAF6-04060009	APRON, AIR CHOKE	1
19	PAF6-04060010	BLOCK, AIR CHOKE	1
20	PAF6-04060001	BODY, CARBURETOR	1
21	PAF6-04060016	PIN, FLOAT	1
22	PAF6-04060014	NEEDLE VALVE	1
23	PAF6-04060017	MAIN NOZZLE	1
24	PAF6-04060018	MAIN JET	1
25	PAF6-04060015	FLOAT	1
26	PAF6-04060020	SEAL RING	1
27	PAF6-04060021	SCREW, DRAIN	1
28	PAGB/T93-4	SPRING WASHER 4	2
29	PAGB/T818-M4x12	SCREW M4x12	2
30	PAF6-04060019	BODY, OIL CUP	1

## ELECTRICIDAD / ELECTRICAL / PARTE ELETTRICA



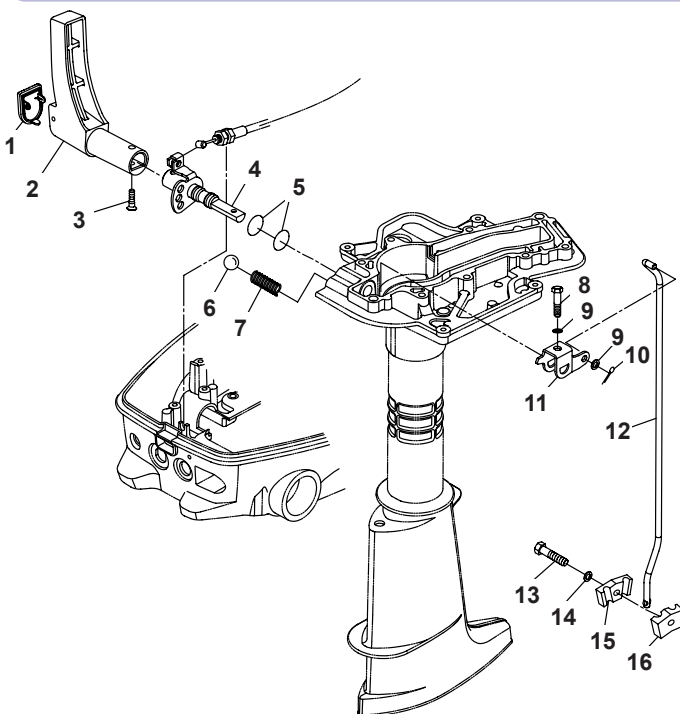
N°	Ref.	Description	Quantity
1	PAF8-05000024	NUT, FLYWHEEL	1
2	PAT15-05000011	WASHER, FLYWHEEL	1
3	PAF6-04000029	PULLEY, STANTER	1
4	PAF6-04000500	FLYWHEEL ASSY	1
5	PAF4-04000019	KEY	1
6	PAGB/T5783-M6x25	BOLT M6x25	2
7	PAGB/T97.1-6	WASHER 6	5
8	PAF6-04000400	IGNITION COIL ASSY	1
9	PANGK CR6HSA	SPARK PLUG	1
10	PAF6-04000700A	FLYWHEEL ASSY	1
11	PAF6-04000800A	STARTOR ASSY	1
12	PAGB/T5783-M6x30	BOLT M6x30	3

**COLA SUPERIOR / UPPER CASING / PARTE ALTA PIEDE**



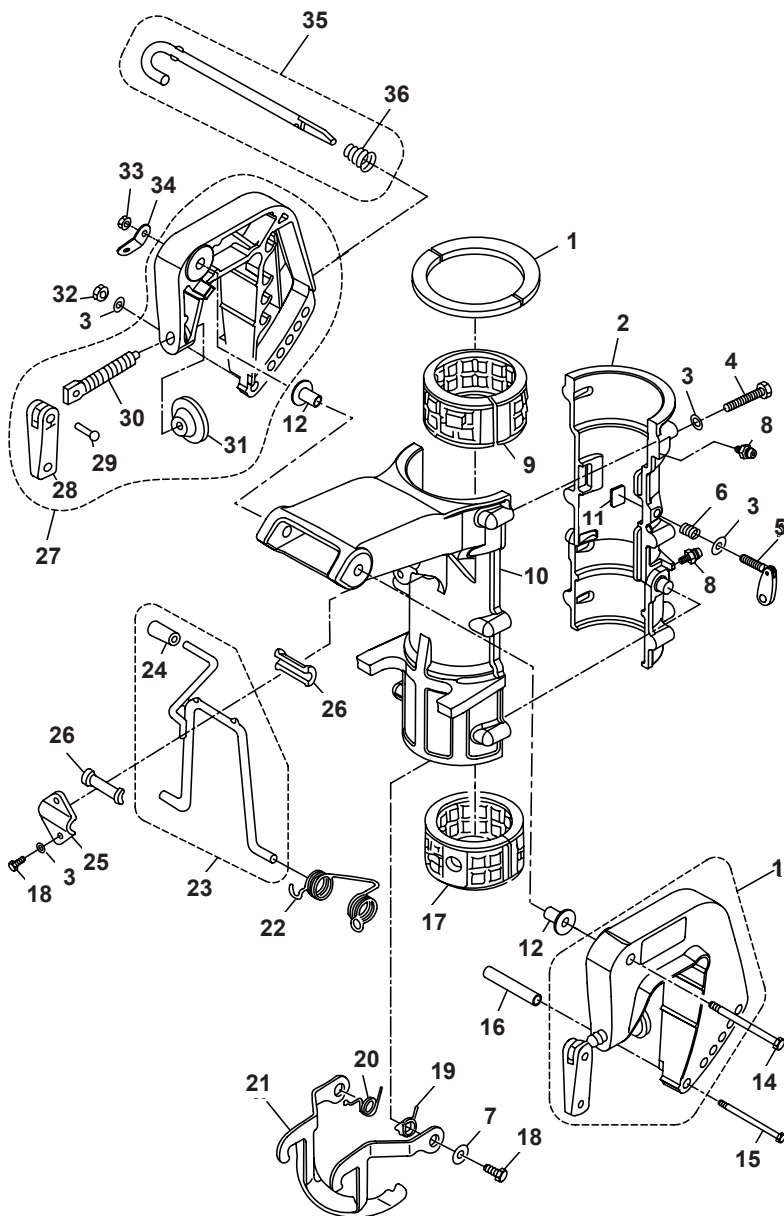
N°	Ref.	Description	Quantity
1	PAF6-00000001	GASKET ENGINE	1
2	PAF6-02000003	RUBBER SLEEVE, OIL OUTLET	1
3	PAF6-02000004	PRESSING PLATE	1
4	PAGB/T97.1-6	WASHER 6	10
5	PAGB/T5783-M6x14	BOLT M6x14	1
6	PAF4-00000001	HOLLOW PIN Ø9x6.5x10	2
7	PAGB/T5782-M6x40	M6x40	5
8	PAF4-02040002	RUBBER SEAL	1
9	PAF6-02000001L	WATER PIPE (L)	1
	PAF6-02000001S	WATER PIPE (S)	1
10	PAF4-02000011	SEAL, SHIFT ROD	1
11	PAF4-02000012	RUBBER PLUG, UPPER CASING	1
12	PAGB/T5782-M6x50	BOLT M6x50	4
13	PAG6-02000101	UPPER CASING	1
14	PAF4-02000002	COPPER BUSH, UPPER CASING	1
15	PAF6-02000100	UPPER CASING ASSY	1
16	PAT5-00000001	HOLLOW PIN Ø7.5	1
17	PAT5-00000002	HOLLOW PIN Ø9.5	1
18	PAGB/T893.1-22	CIRCLIP 22	1
19	PAT5-02010001	EXTENSION	1
20	PAT5-02010000	EXTENSION ASSY	1
21	PAT5-02010002	BUSHING, DRIVE SHAFT	1
22	PAF2.6-03020003L	RUBBER BUSHING	1
23	PAT5-02000008	ORIENTED PLATE, WATER PIPE	1
24	PAGB/T818-M5x10	SCREW M5x10	2

**CAMBIO / CONTROL SYSTEM / CALANDRA**



N°	Ref.	Description	Quantity
1	PAF6-02000005-1	COVER	1
2	PAF6-02000005	HANDLE, GEAR SHIFT	1
3	PAGB/T820-M5x20	SCREW M5x20	1
4	PAF6-02000200	SHAFT, CHANGE	1
5	PAJISB2401-P9	O-RING	2
6	PAGB/T308-8	BALL 8	1
7	PAF4-02000003	SPRING, GEAR	1
8	PAGB/T5783-M5x25	BOLT M5x25	1
9	PAGB/T97.1-5	WASHER 5	2
10	PAGB/T91-1.6x12	PIN COTTER 1.6x12	1
11	PAF4-02000006	LEVER, SHIFT ROD	1
12	PAF6-02000002	ROD, SHIFT	1
13	PAGB/T5783-M6x20	BOLT M6x20	1
14	PAF4-00000005	BIG WASHER	1
15	PAF2.6-00000001	CONNECTOR, SHIFT ROD "A"	1
16	PAF2.6-00000002	CONNECTOR, SHIFT ROD "B"	1

## SOPORTE MOTOR / BRACKET / SUPPORTO MOTORE



Nº	Ref.	Description	Quantity
1	PAT5-01010003	NYLON GASKET	2
2	PAF6-01010101	COVER, ROTARY BRACKET	1
3	PAGB/T97.1-6	WASHER 6	10
4	PAGB/T5783-M6x35	BOLT M6x35	6
5	PAF2.6-01050100	LOCKED HANDLE ASSY	1
6	PAF2.6-01050002	COMPRESS SPRING	1
7	PAGB/T96-6	BIG WASHER 6	3
8	PAJB/T9740.1-M6	OILER M6	2
9	PAT5-01010004	UPPER ABSORBER	1
10	PAF6-01010001	SEAT, ROTARY BRACKET	1
11	PAT5-01010100	LOCKED BLOCK ASSY	2
12	PAF4-01000003	NYLON WASHER	2
13	PAF4-01010000	CLAMP BRACKET ASSY (RIGHT)	1
14	PAGB/T5782-M8x140	BOLT M8x140	1
15	PAGB/T5782-M6x130	BOLT M6x130	1
16	PAF8-01010001	TUBE BOLT	1
17	PAT5-01010005	LOWER ABSORBER	1
18	PAGB/T5783-M6x12	BOLT M6x12	4
19	PAF4-01000007	WREST SPRING (RIGHT)	1
20	PAF4-01000006	WREST SPRING (LEFT)	1
21	PAT5-01010300	LOCKED HOOK ASSY, TILT	1
22	PAT5-01010002	WREST SPRING, BRACKET	1
23	PAT5-01010400	SUPPORT ASSY	1
24	PAF4-01030103	HANDLE SHEATH	1
25	PAF8-01010105	PRESS PLATE	1
26	PAF8-01010103	BUSHING, BRACKET	2
27	PAF4-01020000	CLAMP BRACKET ASSY (LEFT)	1
28	PAF4-01010004	CLAMP HANDLE, STERN	2
29	PAF4-01010005	RIVET, CLAMP HANDLE	2
30	PAF4-01010002	CLAMP SCREW	2
31	PAF4-01010003	CLAMP PAD	2
32	PAGB/T6170-M6	NUT M6	1
33	PAGB/T889.1-M8	LOCKING NUT M8	1
34	PAF4-01000002	PLATE, TWO HOLE	1
35	PAF8-01010200	THRUST ROD ASSY	1
36	PAF4-01050002	CONICAL SPRING	1

## COLA INFERIOR / LOWER CASING / PARTE INFERIORE PIEDE

Nº	Ref.	Description	Quantity	Nº	Ref.	Description	Quantity
1	PAF6-03000000L	LOWER CASING ASSY (L)	1	16	PAF25-04000007	PIN Ø4x10	2
	PAF6-03000000S	LOWER CASING ASSY (S)	1	17	PAT5-03000201	WATER PUMP SEAT	1
2	PAF6-03000100 (L)	DRIVE SHAFT ASSY (L)	1	18	PAT5-03000100 (L)	CAM ASSY, SHIFT ROD (L)	1
	PAF6-03000100 (S)	DRIVE SHAFT ASSY (S)	1		PAT5-03000100 (S)	CAM ASSY, SHIFT ROD (S)	1
3	PAT5-03000009	DOWEL PIN, IMPELLER	1	19	PAGB/T879.2-1.5x12	PIN 1.5x12	1
4	PAT5-03000003	PINION	1	20	PAJISB2401 P16	O-RING 15.8x2.4	1
5	PAT5-03000013	SEAL A, WATER PIPE	2	21	PAT5-03000020	ORIENTED BUSHING, SHIFT ROD	1
6	PAT5-03000012	WATER PIPE B	1	22	PAT5-03000022	SEAL B, ORIENTED BUSHING	1
7	PAT5-03000014	SEAL B, WATER PIPE	1	23	PAT5-03000023	PLATE, ORIENTED BUSHING	1
8	PAGB/T5782-M6x45	BOLT M6x45	4	24	PAGB/T5783-M6x16	BOLT M6x16	2
9	PAGB/T97.1-6	WASHER 6	9	25	PAT5-03000202	OIL SEAL, WTAER PUMP SEAT	1
10	PAF6-03000001	WATER PUMP	1	26	PAT5-03000004-1	SHIM 0.10mm	
11	PAF6-03000002	INNER SHELL, WATER PUMP	1		PAT5-03000004-2	SHIM 0.15mm	
12	PAT5-03000300	IMPELLER, WATER PUMP	1	27	PAT5-03000005	GASKET, WATER PUMP SEAT	1
13	PAF6-03000003	UPPER GASKET, OUTER PLATE	1	28	PATLA1412Z	NEEDLE BEARING	1
14	PAT5-03000007	OUTER PLATE	1	29	PAT5-03000700	LOWER CASING ASSY	1
15	PAT5-03000006	LOWER GASKET, OUTER PLATE	1	30	PAT5-00000001	HOLLOW PIN Ø7.5x10	1



N°	Ref.	Description	Quanty
31	PAGB/T861.1-6	LOCK WASHER 6	1
32	PAT5-03000017	ANODE	1
33	PAT5-00000002	HOLLOW PIN Ø9.5x10	1
34	PAGB/T97.1-8	WASHER 8	1
35	PAGB/T5782-M8x40	BOLT M8x40	1
	PAGB/T5782-M8x167	BOLT M8x167	1
36	PAF4-03000023	PLUG, OIL HOSE	2
37	PAF4-03000024	GASKET	2
38	PAGB/T5782-M6x45	BOLT M6x45	1
	PAGB/T5782-M6x172	BOLT M6x172	1
39	PAGB/T820-M6x20	SCREW M6x20	1
40	PAT5-03000016	WATER INLET	1
41	PAGB/T276-6004	BEARING 6004	1
42	PAF8-04000002-1	SHIM 0.10mm	
	PAF8-04000002-2	SHIM 0.15mm	
43	PAT5-03010000	FORWARD GEAR ASSY	1
44	PAT5-03000404	PIN, CLUTCH	1
45	PAT5-03000400	SHAFT ASSY, PROPELLER	1
46	PAGB/T879.1-3.5x28	PIN 3.5x28	1
47	PAT5-03000403	CLUTCH, DOG	1
48	PAT5-03000402	SPRING, CLUTCH	1
49	PAT5-03000401	SHAFT, PROPELLER	1
50	PAT5-03000015	WASHER, REVERSE GEAR	1
51	PAT5-03000600	REVERSE GEAR ASSY	1
52	PAT5-03000500	COVER, ASSY, LOWER CASING	1
53	PAGB/T276-6002	BEARING 6002	1
54	PAJASOF404 31-050	O-RING	1
55	PAF8-04040004	OIL SEAL	1
56	PAT5-03000501	COVER, LOWER CASING	1
57	PAGB/T5783-M6x20	BOLT M6x20	2
58	PAT5-03000800	CUSHION ASSY, PROPELLER SHAFT	1
59	PAF6-03010000	PROPELLER ASSY	1
60	PAGB/T96-10	WASHER 10	1
61	PAF15-06000016	NOTCH NUT	1
62	PAGB/T91-3.2x18	PIN, COTTER Ø3.2x18	1

