



**!** NOTICE: electronics is constantly developing so please verify the updated price and possible changes before ordering.

## FM radio/Bluetooth/USB/MP3

### Bluetooth dashboard amplifier

**BLUETOOTH**

**WATERPROOF**

**IP66**

Amplifier with controls on the dashboard. It receives the music signal from any Bluetooth device (Smartphone, Tablet, etc.).

Input: Bluetooth, AUX and USB (AUX and USB at the rear of the amplifier).

Water-resistant and ideal for installation on the dashboard.

Separate output and controls for subwoofer.

Power: 4x45W.

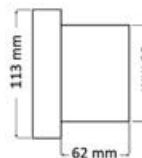
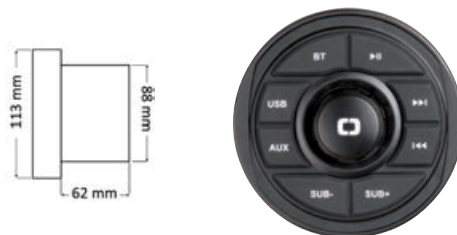
Voltage: 12V.

Central knob for easy volume setting.

Code	Description	V
29.531.00	Bluetooth dashboard amplifier	12



**OSCOLATI**



**Bluetooth**



### Radio for instrument panel with remote control and DAB antenna

**DAB VERSION**

**SPLASHPROOF**

- Compatible devices: Bluetooth/USB/MP3/FM/DAB.

- Display: 3" colour screen, video line in/out.

- Also for external installation

- Input: Bluetooth, USB, 1 x RCA stereo pair.

- Power: 4x40 W.

- Backup memory.

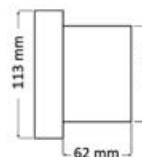
- 12V voltage.

- Accessories: DAB antenna, remote control.

Code	Description
29.530.02	Dashboard radio with accessories
29.530.08	Additional USB-AUX cord with watertight front panel. To be used for listening to music on external USB memories.



**OSCOLATI**



29.530.02



29.530.02

### BOSS FM/AM/Bluetooth/USB/MP3 radio for dashboard

AM/FM radio with RDS system. 3.5-mm USB and AUX inlets on the rear (that can be mounted on the dashboard by means of accessory 29.530.08).

Bluetooth connection for audio streaming, active matrix TFT display, IPX6 degree protection, 150W RMS power, 63W peak per channel.

12V power, 15A absorption. 76-mm Ø bore, 111-mm recess.

Code	Description
29.530.05	MGR350B radio for dashboard

