

**Straight overhead LED lights**

ON-OFF switch, white body + satin light bulb.

They replace the equivalent ones fitted with fluorescent tube and offer lower consumption and longer duration.

Code	Light	V	W	Lumen	K	No of LEDs	mm	LED beam angle
13.555.13	White	12	6.3	457	5600	18	410x65x35 h	120°
13.556.13	White	12	12.7	889	5600	36	410x95x35 h	120°

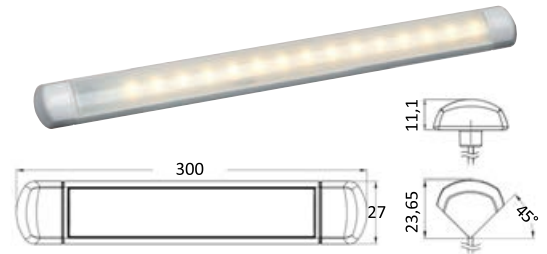
**OSCULATI****Watertight LED table light with touch switch****IP66**

HD LED light source.

Ideal for bathrooms, kitchens, peaks, engine rooms, booms, sailing boats, etc. For flat mounting, it also comes with a kit for mounting at 45°.

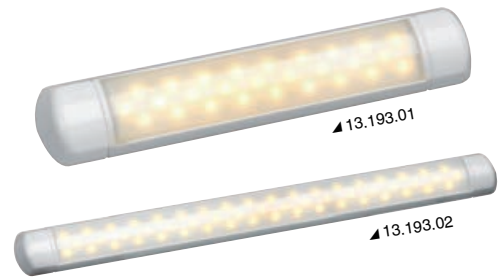
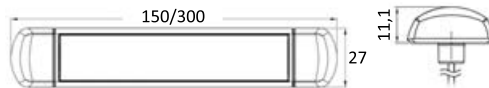
Blue light touch switch.

Code	V	W	Lumen	K	LED beam angle	No of LEDs
13.193.21	12/24	6	140	3300	130°	16

**LED fluorescent light, watertight free-standing version****IP66**

SMD LED light source. Flat mounting. Ideal for bathrooms, kitchens, peaks, engine rooms, under boom on sailing boats, etc. White technopolymer body.

Code	V	W	Lumen	K	LED beam angle	No. of LEDs
13.193.01	12/24	1.8	72	3325	110°	27
13.193.02	12/24	2.4	142	3325	110°	54

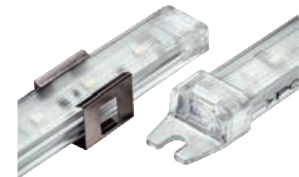
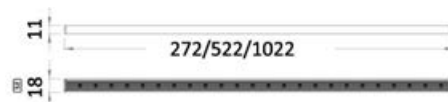
**Light strips****LABCRAFT Orizon LED strip lights****IP66****LED**

Transparent polycarbonate light bars with Cree Superflux high-efficiency and low-consumption LEDs. Mounting by means of 2 screw or self-adhesive tape. Ultra-reduced section (18 x 11 mm). 100% watertight since all parts are inside the polycarbonate extruded body.

**Labcraft**  
DESIGN LED LIGHTING

Code	V	W	Lumen	K	LED beam angle	No of LEDs	LED colour	Length mm	Section mm
13.843.03	12	3	320	6100-6900	115°	12	<input type="checkbox"/> White	272	18x11
13.843.04	24	3	320	6100-6900	115°	12	<input type="checkbox"/> White	272	18x11
13.843.01	12	6	640	2000-3000	115°	24	<input type="checkbox"/> White	522	18x11
13.843.02	24	6	640	2000-3000	115°	24	<input type="checkbox"/> White	522	18x11
13.843.05	12	12	1280	2000-3000	115°	48	<input type="checkbox"/> White	1022	18x11
13.843.06	24	12	1280	2000-3000	115°	48	<input type="checkbox"/> White	1022	18x11

Orizon lights are made in England.

**LED light strip****IP66****LED**

Light strip made of clear thermoplastic with 2835 LEDs. 4-screw mounting or with double-sided tape. 100% watertight. LEDs are embedded in the front resin element. ideal for indirect lighting in dinettes and cabins.

Code	V	W	Lumen	K	LED beam angle	No of LEDs	LED colour	Length mm	Section mm
13.844.01	12	3	265	5800	120°	17	<input type="checkbox"/> White	229	22x11
13.844.06	12	6	529	5800	120°	45	<input type="checkbox"/> White	508	22x11

