

Hatch stays and brackets for lockers



Telescopic hatch adjuster, heavy duty

Code	Description	Range mm
38.191.40	chromed brass	320/500
38.191.41	chromed brass	360/640



Telescopic hatch adjuster

Code	Description	Range mm
38.191.50	Made of chromed brass . Very sturdy.	205/305



Extra-sturdy spring hatch stay

Made of **stainless steel**, fitted with spring **hatch** opening system, **supports heavy loads**, suitable for hatches and bilge peaks.

Code	Length mm	spring Ø mm	INCLUDED
38.421.67	350	22	2 fixing plates size 47x47 mm



Telescopic hatch stay

Made of **mirror polished stainless steel**, **telescopic version** with locking on each position by rotation the conical point.

Code	Adjustable mm
38.281.00	250/425
38.282.00	300/525



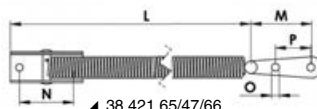
Spring hatch stay

Made of **stainless steel**, fitted with hatch opening spring, includes fork U-bolt and L shape plate. **Equipped with safety stainless steel cable to prevent the springs from stretching.**

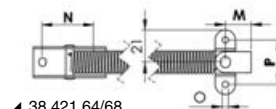
Code	Terminal (1)	Terminal (2)	Length mm	Spring Ø mm	L mm	M mm	N mm	O mm	P mm
38.421.65	A	D	220	10.6	235	40	30	4.2	18
38.421.47	A	D	470	10.6	425	40	30	4.2	18
38.421.66	B	D	260	14	275	45	35	4.7	23
38.421.64	C	D	220	10.6	235	17	30	4.2	27
38.421.68	C	D	260	14.2	275	24	36	5.1	42



▲ 38.421.68



▲ 38.421.65/47/66



▲ 38.421.64/68



Mini gas spring

Made of **stainless steel**, designed to lift small hatches or kitchen furniture.

Code	Open size mm	Travel mm	Thrust kg
38.008.00	144	38	5



Telescopic hatch stay

Suitable for **nylon** portholes and hatches, fitted with **stainless steel** sliding rod; this special sliding system ensures an extraordinary locking and a remarkable travel at the same time.

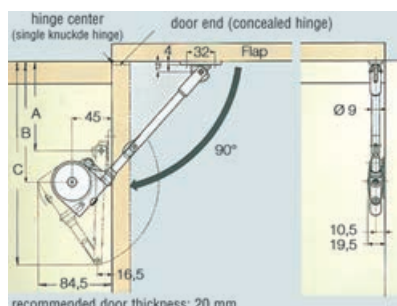
Code	Travel mm
38.191.60	220/480



Ready to be used with plates 38.013.00; 38.013.01 included on the drawing..



38.013.00;
38.013.01 OPTIONAL Plates **sold separately.**



Soft Down Stay - upward window stay

Once the hatch is raised, the bracket keeps it under position, when is closed the bracket dampens the descending until the door is completely closed; colour: white, includes mounting plate, torsional moment calculation: **bracket**: door length (cm) x 1/2 x door weight (kg).

Code	For door	Mounting plate
48.610.00	90° opening	Included

