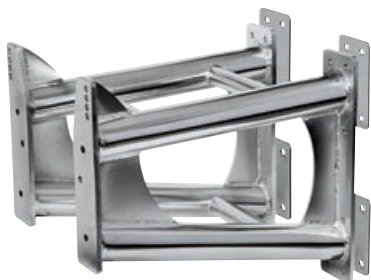


*U Douglas Marine*



**New**

### Bracket stainless steel engine stand

Universal stainless steel model. For outboard engines 140 to 300 HP.  
Very good make, it increases performance and leaves more room on board.  
It comes with 4 counterplates for fixing.

Code	For outboards	Total weight kg
47.375.06	140 to 300 HP	35.2



▲ 47.250.00



▲ 47.250.02

### CMC electro-hydraulic outboard lift

Made of **6061 T6 aluminium alloy**, fitted with **stainless steel** nuts and bolts and **bronze-aluminium** bearings. Supplied with position indicating device and control switch to mount on the control panel.

Code	volt	For FB MAX	Stroke mm	Speed mm/min	Stern overhang mm	mm	kg
47.250.00	12	V6	125	93	140	460x418	21,5
47.250.02*	12	V8	125	71	140	460x418	30,5

\* Model for V8 engines (Yamaha 300 HP), extremely reinforced with extruded SS guides and rails.



▲ Position indicator



### Outboard engine towing stay

It lifts the outboard engine from the leg when the hull is loaded on a trailer or on a protection cradle.  
Adjustable universal size fitting any model. The leg support is made of **rubber** and fitted with mounting straps. 150-HP 2-cylinder max capacity.

Code	Adjustable
47.110.96	from 50 to 80 cm

## Lifting harness for outboard engines

**OSCULATI**



▲ 47.391.00

### Lifting harness for outboard engines

Fitted with upper handle, universal size for all outboards on sale. Essential for moving outboard engines from the **Pram to the pushpit** and vice versa.

Code	Model	Suggested for engines
47.391.00	Standard	max 15 - kg 35
47.391.02	Heavy Duty	max 25 - kg 50

Ideal for little cranes such as 42.360.00



▲ 47.391.02

