

Push to close latches



Pull latches / hatch lifting device

Made of mirror polished **precision-cast AISI 316 stainless steel**; using a pressure lock, the handle can stay opened or closed.

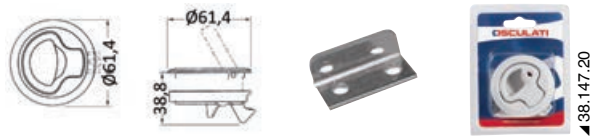
Code	For hatches with thickness mm	Hole Ø mm	Flange Ø mm
38.147.50	3/19	51	62



Plastic flush pull latches

Made of **white nylon**, fitted with **stainless steel** lock stopper and two 2 mm stoppers.

Code	Version	Color	recess Ø size mm	external Ø size mm	Inner size mm	Fites thickness size mm
38.147.00	without lock	white	49.6	61.4	38.8	from 7 to 18
38.147.01	without lock	black	49.6	61.4	38.8	from 7 to 18
38.147.20	with lock	white	49.6	61.4	38.8	from 7 to 18
38.147.21	with lock	black	49.6	61.4	38.8	from 7 to 18

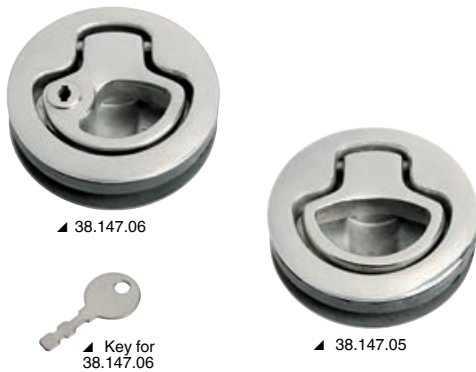


Lock for small hatches/flush pulls

AISI 316 Snap lock with spring handle. Mirror-polished AISI 316 stainless steel.

Code	Lock	For thickness mm	outside Ø mm	recess Ø mm	Depth mm
38.152.70	no	7 - 19	44	38	25.3
38.152.71	yes	7 - 19	44	38	25.3

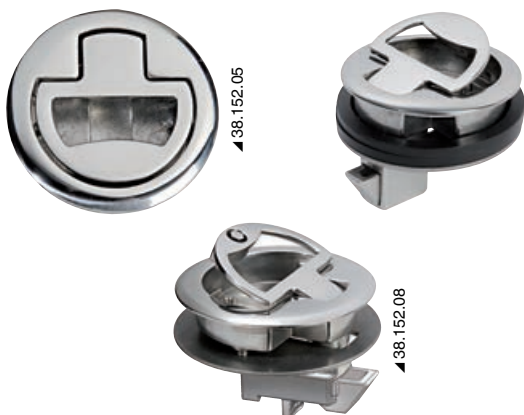
20.366.98 Spare key for 38.152.71.



Flush pull latches small

AISI 316 Made of **mirror-polished AISI 316 stainless steel**. Equipped with square stop.

Code	Lock	For thickness mm	External Ø mm	Recess Ø mm
38.147.05	No	5 - 12	62	48
38.147.06	Yes	5 - 12	62	48



Flush pull latch with spring handle and snap lock

Mirror polished AISI 316 stainless steel.

Code	Lock	For thickness mm	External Ø mm	Recess Ø mm	Version
38.152.05	No	5-12	62	50	Standard
38.152.06	Yes	5-12	62	50	Standard
38.152.08	Yes	5-12	62	50	Opening from inside and outside

20.366.98 Spare key for 38.152.06/08

