

Sheaves and springs



Sheave

Code	Type	Pulley		Body in
		size mm	made of	
03.300.00	fixed with 3-hole base	50	nylon	brass
03.301.00	movable with bridge	50	nylon	brass
03.302.00	double joint with bridge	50	nylon	brass

Spring for steering systems



Code	Description
03.190.00	Made of high resistant stainless steel 18/8.

Sheave for steering system



Code	Description
03.305.01	Fitted with rotating spring shackle, made of chromed brass and 50 mm nylon pulley.

Sheave for cockpit rope exit



Code	Description
03.307.00	Made of chromed brass , fitted with 60 mm nylon pulley.

Gaskets, Covers, Bellows and Witches Hats



Cable fairlead made of polypropylene

For electrical cables and steering gears.

Code	internal Ø mm	external Ø mm	Plastic color	
03.408.00BI	60	90	<input type="checkbox"/>	white
03.408.00NE	60	90	<input checked="" type="checkbox"/>	black

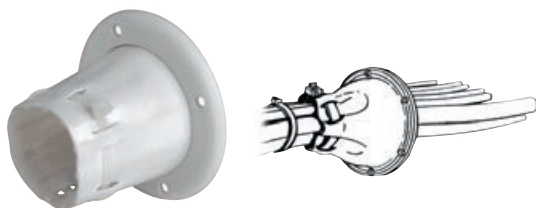


Bellows for cable protection, made of plastic

It comes with two ties. It protects the cables and makes them watertight.

Code	Ø mm	Length mm	Color	
03.150.80	38	190	<input checked="" type="checkbox"/>	black

OSCULATI



Fairlead cradle, conic, made of PVC

Includes mounting ring nut and **nylon** cable tightening clamp.

Code	internal Ø mm	Ø out mm	size mm	Color	ORDER BY BOX
03.407.00	70	105	74	<input type="checkbox"/> white	
03.407.01	70	105	74	<input checked="" type="checkbox"/> black	5

Fairlead ring nut and washer, made of PVC

Mirror polished **AISI 316 stainless steel** ring nut.

Ring nut	Gasket		internal Ø mm	Ø external mm	ORDER BY BOX
	<input type="checkbox"/> white	<input checked="" type="checkbox"/> black			
03.410.01	03.420.70	03.420.72	48	75	10
03.410.02	03.420.90	03.420.92	58	90	10

Fairlead ring nut 03.410.02 with bellows

Mirror polished **stainless steel** ring nut, rubber DUTRAL bellows, anti-saline and watertight.

Code	Color	Internal Ø mm	External Ø mm
03.410.00	<input checked="" type="checkbox"/> black	58	90
03.411.00	<input type="checkbox"/> grey	58	90

