

**Polypropylene inspection hatch, fitted with rotating lock and bayonet**

100% flush. The lid also covers the screws.

white	black	Ø Outer mm	inner Ø mm
20.337.01BI	20.337.01NE	135	100
20.337.02BI	20.337.02NE	204	155

**Watertight white/transparent ABS inspection hatch**

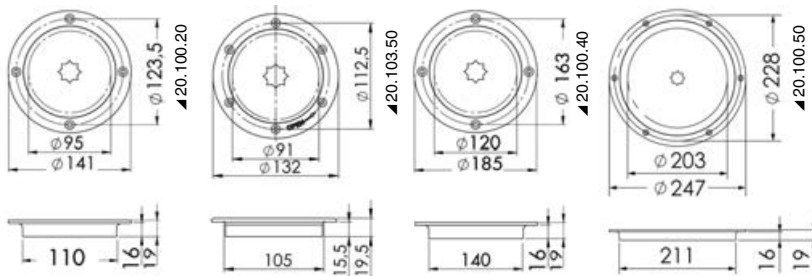
Fitted with rear nylon object/document holding bag.

Code	External Ø mm	Internal Ø mm
20.209.00	205	150

**Watertight inspection hatch with quick opening**

Made of **AISI 316 stainless steel**, 1/4 turn opening with winch handle (not included). The cover remains attached to the winch handle for easy removal.

Code	External Ø mm	Passage mm
20.103.50	132	91
20.100.20	141	95
20.100.40	185	120
20.100.50	247	203

**OSCULATI****Watertight WHALE hatch, fitted with screw cover**

Fitted with nitrile seals; approved for lifeboats; made of **nylon**; it can bear a maximum internal pressure of  $0,46 \text{ kg/cm}^2 = 6,5 \text{ psi}$ .

Code	Plug color	Ø Outer mm	Opening mm	Thickness mm	housing mm	holes on centre mm
20.400.00	black	236	180	32	187	212
20.400.01	- transparent	236	180	32	187	212

**Whale®****Compartments and deck fillers****Flush-mount plastic compartment for fuel plug housing**

Made of hydrocarbon-resistant nylon

Code	Recess mm	Inner size mm	Frame mm	Colour
20.899.00	110x155	78	182x136	White
20.899.50	110x155	78	182x136	Black

**Built-in compartment for Deck Filler**

Fitted with hatch, made of hydrocarbon-resistant nylon.

Code	Version	Color	A mm	B mm	C mm	D mm	E mm	Symbol
20.900.01	Standard	White	190	148	150	113	71	Fuel
20.900.02	With lock	White	190	148	150	113	71	Fuel

