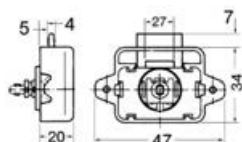
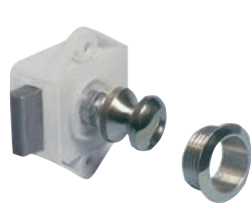


Mini push-lock



Classic version

Made of **nylon**, with **brass** button and ring. For 24-mm Ø ring.

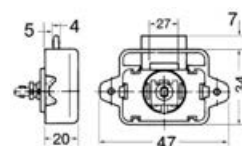
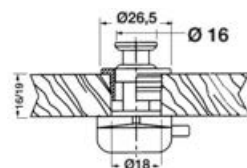
Code	Finish	For hatches up to mm
38.182.01	Chromed brass	16
38.182.04	Polished and coated brass	16



Flat version

Made of **nylon**, with **brass** button and ring. For 26-mm Ø ring.

Code	Model	for thickness up to mm
38.182.09	Chromed brass	16
38.182.10	Chromed brass	19



SUGATSUNE latches

SUGATSUNE



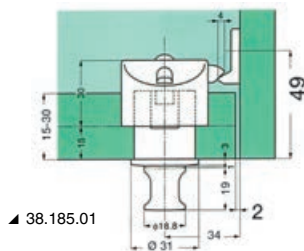
▲ 38.185.01

▲ 38.185.01

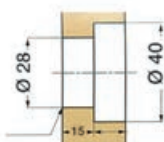
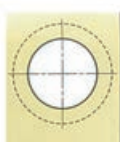
Push Knobs for cabinet doors and drawers "Sugatsune Pkl-08"

Compact size, perfect functioning; after closing the cabinet door, press the knob to connect and secure it so that it will not re-open until the knob is pressed and pulled; suitable for thickness of 15 to 30 mm, capacity of 10 kg.

Code	Product	Color
38.185.01	Lock	white
38.186.01	Knob	golden
38.186.02	Knob	chromed



▲ 38.185.01



▲ 38.186.01



▲ 38.186.02



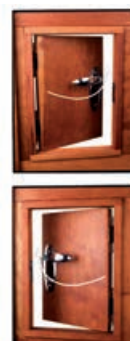
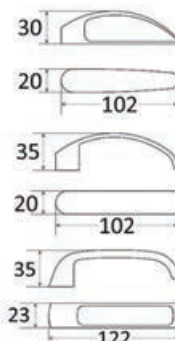
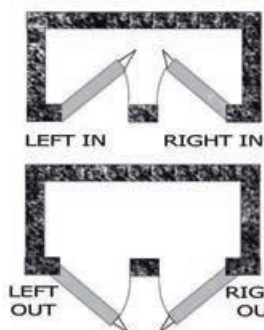
▲ 38.186.01



▲ 38.186.02

AISI 316 stainless steel built-in locks

Mirror-polished, suitable for doors 16 mm thick minimum. 6 mm handle square.



Lock/Latch Type:
LEFT OUTWARD
Regular Bevel



Lock/Latch Type:
RIGHT OUTWARD
Reverse Bevel