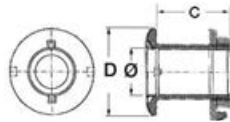




316 stainless steel fittings, skin fittings and valves

OSCULATI



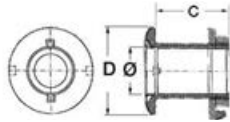
▲17.421.80/87

All-thread skin fitting

AISI 316 Supplied with **mirror polished** ground connections.

Code	Thread	C mm	D mm	Ø mm
17.421.80	3/8"	53	35	11
17.421.81	1/2"	59	39	15
17.421.82	3/4"	68	49	19
17.421.83	1"	73	55	25
17.421.84	1" 1/4	77	65	34
17.421.85	1" 1/2	80	71	38
17.421.86	2"	95	84	50
17.421.87	2" 1/2	124	110	65

OSCULATI

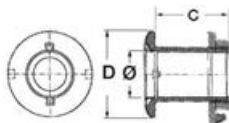


All-thread skin fittings - Short thread

AISI 316 Supplied with **mirror polished** ground connections.

Code	Thread	C mm	D mm	Ø mm
17.421.73	1"	60	48	25

OSCULATI



▲17.422.83/84

All-thread skin fitting - Long thread

AISI 316 Supplied with **mirror polished** ground connections.

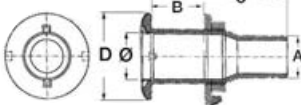
Code	Thread	C mm	D mm	Ø mm
17.422.83	1"	107	55	25
17.422.84	1" 1/4	112	64	35
17.422.85	1" 1/2	112	71	38

OSCULATI



▲17.523.13

▲17.523.16

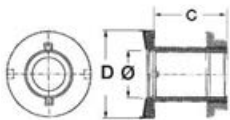


Skin fitting with hose adaptor

AISI 316 Supplied with **mirror polished** ground connections.

Code	Thread	A mm	C mm	B mm	D mm	Ø mm
17.523.10	3/8"	15	53	21	35	11
17.523.11	1/2"	18	59	26	39	15
17.523.12	3/4"	24	68	32	49	19
17.523.13	1"	30	73	33	55	25
17.523.14	1" 1/4	39	77	34	65	34
17.523.15	1" 1/2	44	80	38	71	38
17.523.16	2"	56	95	45	84	50

OSCULATI



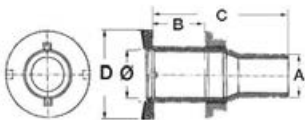
▲17.525.00

Flush-mount skin fitting

AISI 316 Supplied with **mirror polished** ground connections.

Code	Thread	C mm	D mm	Ø mm
17.525.00	3/8"	53	25	11
17.525.01	1/2"	60	38	15
17.525.02	3/4"	68	50	19
17.525.03	1"	72	55	25
17.525.04	1" 1/4	77	65	34
17.525.05	1" 1/2	78	72	38

OSCULATI



▲17.524.01/05

Flush-mount skin fitting with hose adapter

AISI 316 Supplied with **mirror polished** ground connections.

Code	Thread	Ø mm	A mm	B mm	C mm	D mm
17.524.01	1/2"	19	18	28	60	38
17.524.02	3/4"	24	24	36	68	50
17.524.03	1"	31	30	33	72	55
17.524.04	1" 1/4	39	38	39	77	65
17.524.05	1" 1/2	44	44	40	78	72