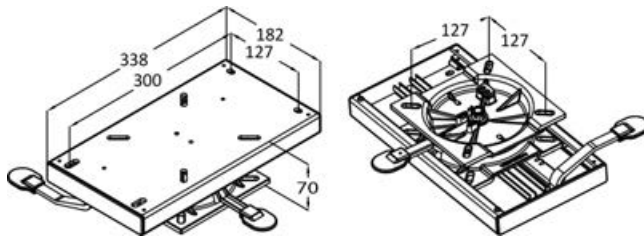


Swivel slide

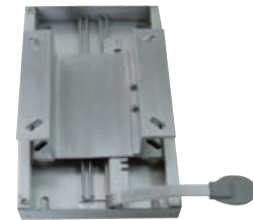
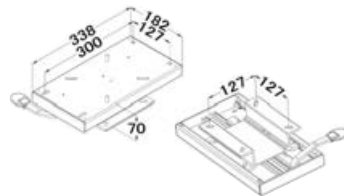
Made of anodized aluminium, it fits any 73-mm Ø pedestal.

| Code | Type |
|-----------|-------|
| 48.713.00 | Slide |



Slide for seats

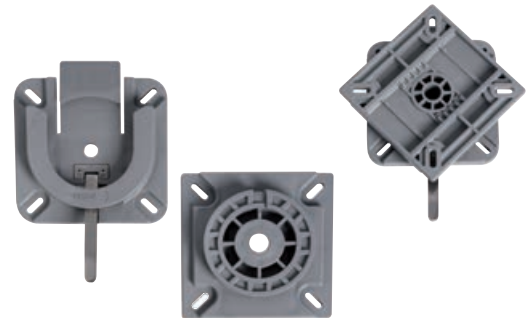
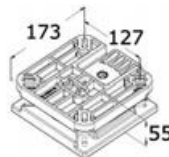
48.714.00 To be fixed to a flat surface. Made of anodized aluminium. It matches any rotating base such as 48.648.03



Rotating and removable base

Quick release base.
Locked forward position and 360° friction rotation.

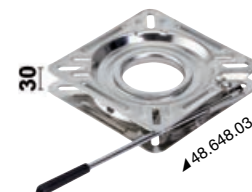
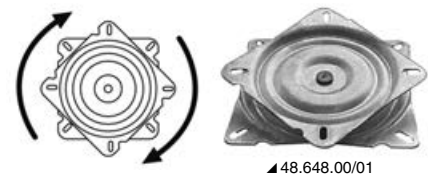
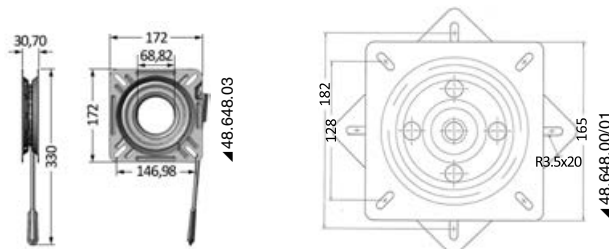
| Code | Rotation | Material | mm |
|-----------|--------------------------------|----------|---------|
| 48.648.15 | 360° + locked forward position | Plastic | 173x173 |



Friction rotating base for seats

Ideal for fishermen as it can rotate as wished.
Ready to match any pedestal in our catalogue.
Aluminium seats and other seats in our catalogue.

| Code | Rotation | Material |
|-----------|---|-----------------|
| 48.648.00 | on one track with ball bearings | Painted steel |
| 48.648.01 | on one track with ball bearings | Stainless steel |
| 48.648.03 | on one track with ball bearings + snap lock with handle | Stainless steel |



Foldable footrest board

Made of epoxy-resin coated light alloy.
Real TEAK platform.

| Code | Platform mm | Open footrest board mm | | Folded footrest board mm | |
|-----------|-------------|------------------------|----------------|--------------------------|----------------|
| | | overhang | support height | overhang | support height |
| 48.587.00 | 300x150 | 200 | 185 | 80 | 244 |

